

# DBCG history Construction of the professional organization

Peer Christiansen

# Background

- High mortality of breast cancer
  - One quarter of patients dead within 1½ year after the diagnosis
- Geographic variation in mortality within DK

- In 1975 a task force was established by the Danish Surgical Society (DKS) to coordinate nationwide the new principles of systemic therapy in breast cancer
- Aim: to ensure optimal diagnostics and treatment of operable breast cancer on a nation-wide basis

# DBCG strategy

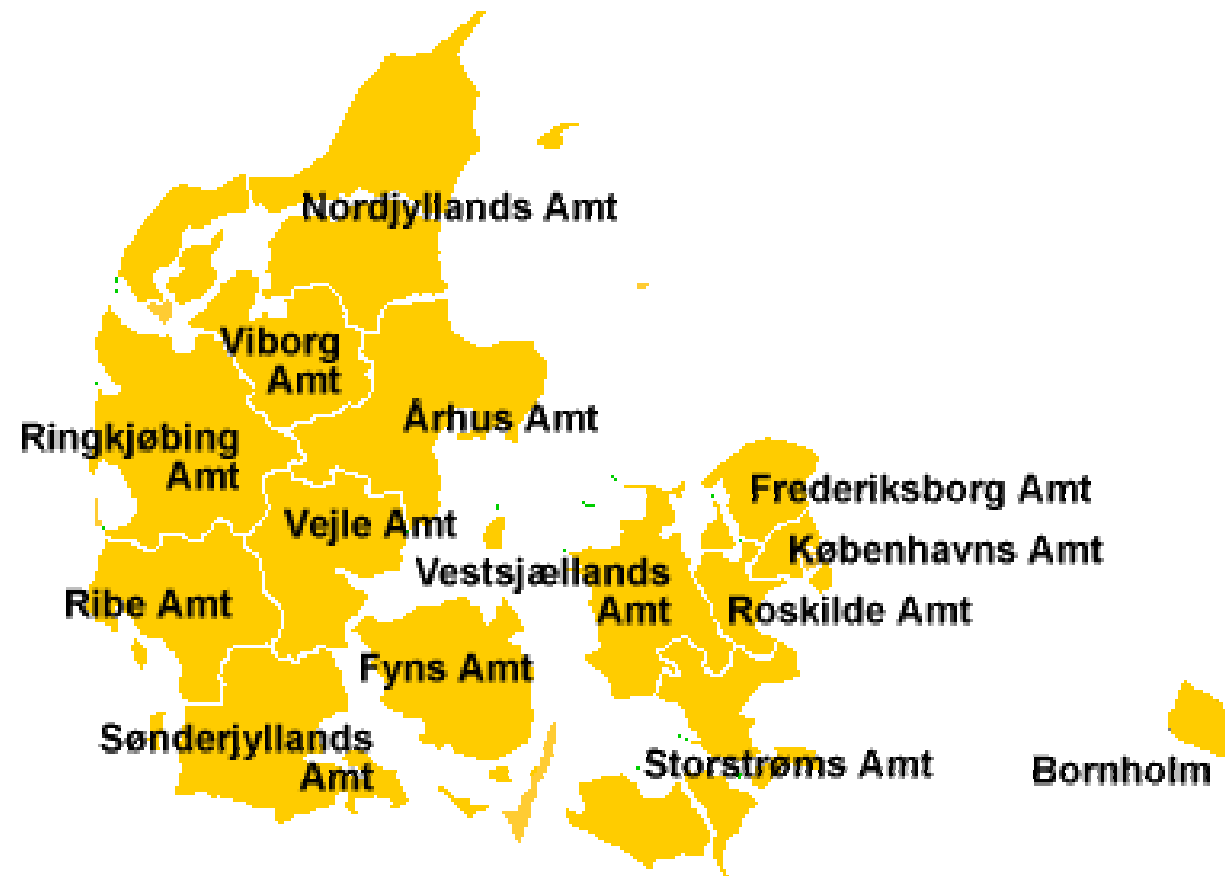
- In 1977 the first clinical programme - DBCG-77 was activated:
  - Clinical guidelines
  - Scientific protocols
- Multidisciplinary approach:
  - The integrated diagnostic system
  - Surgery
  - Radiotherapy
  - Systemic treatment:
    - Chemotherapy
    - Endocrine treatment

# DBCG database

---

- Demographic
- Surgery
- Pathology
- Radiotherapy
- Systemic therapy
- 10-year follow-up
- In situ carcinoma
- Hereditary cancer

# Organization of public health care in Denmark 1977

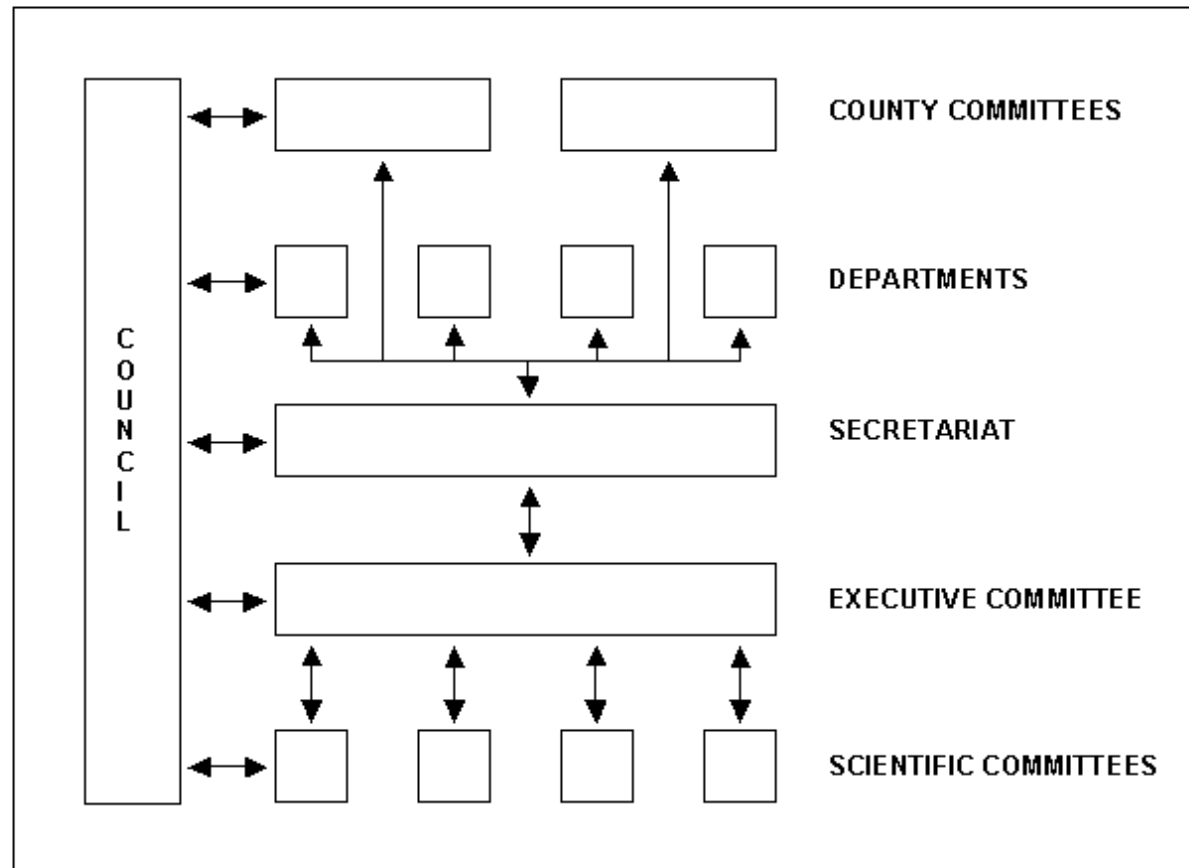


21. august 2008

**DBC**G

DBC **Danish Breast Cancer Cooperative Group**

# Structure and organization of DBCG



# Scientific committees

- Surgery
  - Pathology
  - Radiotherapy
  - Adjuvant systemic therapy
  - Diagnostic radiology
  - Clinical chemistry
  - Clinical physiology
  - Hormone receptors
  - Socioeconomics
  - Prognostic factors
  - Advanced disease
  - Statistics
  - Screening
- Surgery
  - Pathology
  - Radiotherapy
  - Adjuvant systemic therapy
  - Diagnostic radiology
  - Translational research
  - Genetics
  - Epidemiology

21. august 2008



# Danske regioner 2007

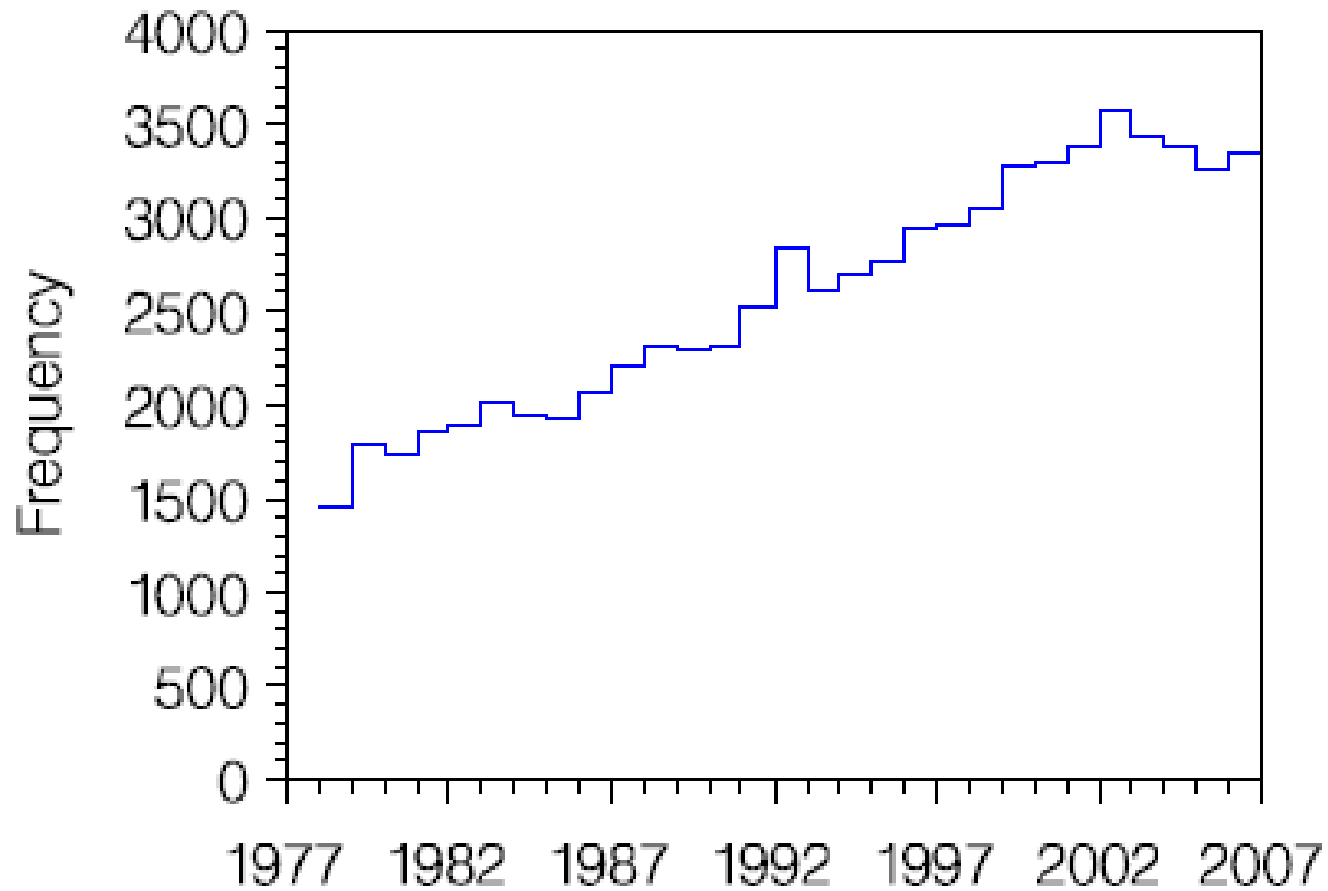


21. august 2008

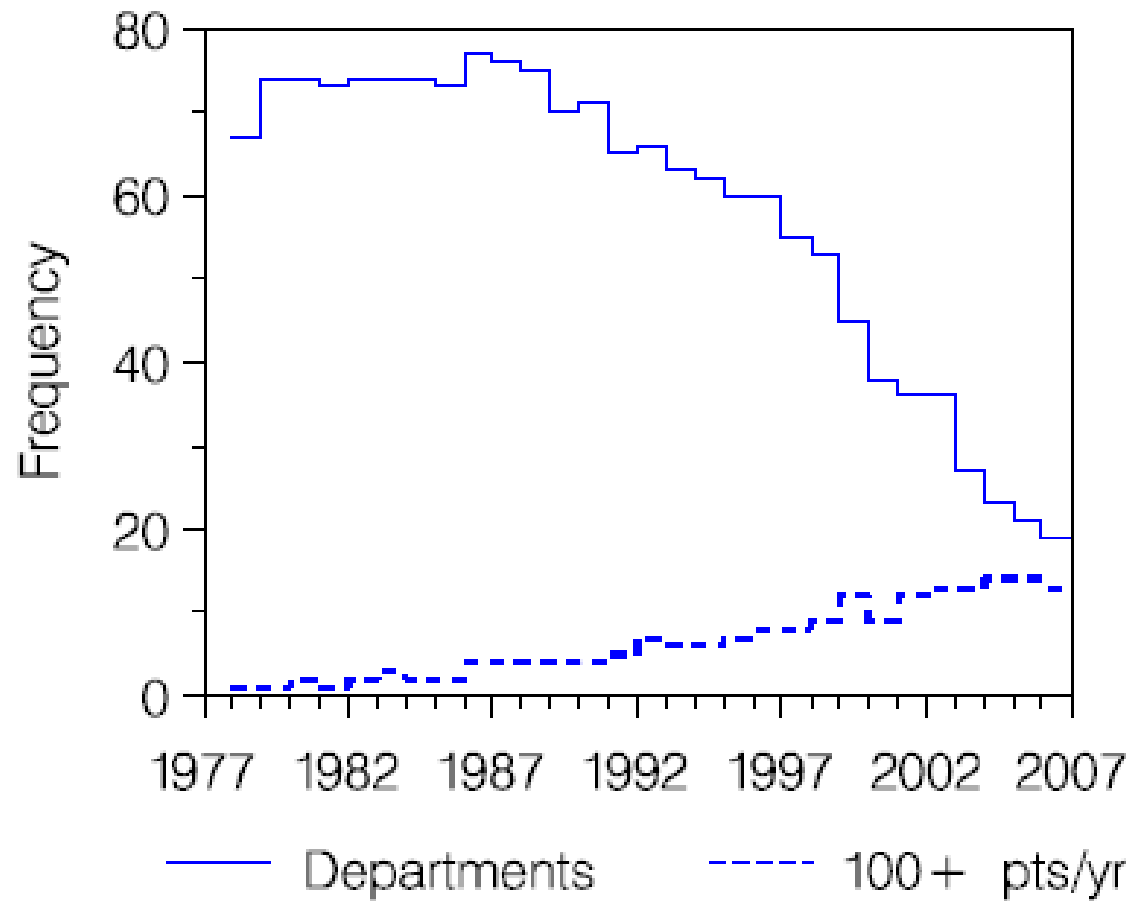
**DBC***G*

DBC Danish Breast Cancer Cooperative Group

# Registrations per year



# Number of surgical departments



# Financing

- Originally financed by the hospital municipalities paying a fixed price per registered patient – DKK 1000-1200
- From 2007 financial support from a common governmental pool founded for invigoration of infrastructuyre of clinical research (like all national multidisciplinary cancer groups)
- External founding covering scientific research activity
- Administration by Rigshospitalet

# International relations

---

- Early Breast Cancer Trialists' Collaborative Group (EBCTCG)
- Scandinavian Breast Cancer Group (SBG)
- Breast International Group (BIG)

# Professional counseling

- National Board of Health:
  - National Cancer Plan I and II
  - Optimal Patient Pathway Descriptions
  - Breast cancer screening programme
- DMCG.dk: The construction of individual multidisciplinary cancer groups rest on the DBCG framework

# Clinical Quality Database

---

- 2005: description of 11 quality indicators
- 2008: data accessible on the web (Analyseportalen)

# DBCG achievements

- A multidisciplinary approach to diagnosis and treatment of breast cancer
- National evidence based treatment guidelines
  - Rapid implementation of new treatment strategies
- Overview of the status and treatment of early breast cancer
  - Quality assurance of diagnostic and treatment procedures
  - Identification of indicators fit for monitoring quality outcome measures



# DBCG achievements (cont.)

- Protocolized research activities
- Promoting translational research
- Improved diagnosis

