

# Status DBCG

- DBCG program 89, 99, 01, 04
- 1990 - 2006  
2004 - 2006
- Opgjort 01.01.2007

# År for operation vs op.type

Alle patienter

	Mastektomi	Lumpektomi	Lump. + Mast.	Biopsi	Total
90-94	10.559	2.537	121	601	13.818
95-99	11.590	3.439	218	589	15.836
00-03	8.808	4.688	231	539	14.266
04-06	4.790	4.676	144	847	10.457
Total	35.747	15.340	714	2.576	54.377

# År for operation vs type

Alle patienter

	Mastektomi	Lumpektomi	Lump. + Mast.	Biopsi	Total
90-94	10.559	2.537	121	601	13.818
95-99	11.590	3.439	218	589	15.836
00-03	8.808	4.688	231	539	14.266
04-06	4.790	4.676	144	847	10.457
Total	35.747	15.340	714	2.576	54.377

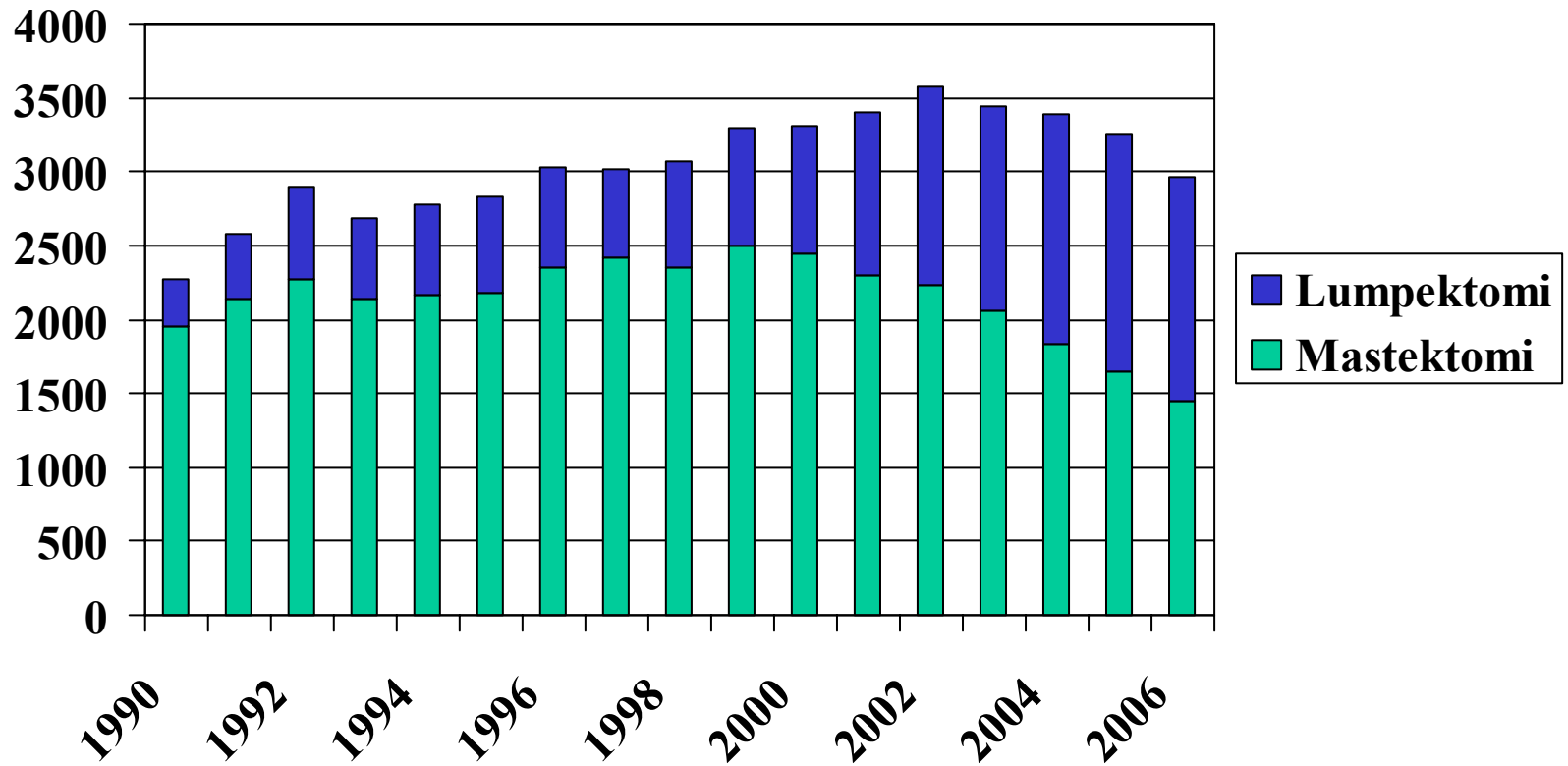
# År for operation vs op.type

Alle patienter undtaget biopsi alene

	Mastektomi	Lumpektomi	Total
90-94	10.680	2.537	13.217
95-99	11.808	3.439	15.247
00-03	9.039	4.688	13.727
04-06	4.934	4.676	9.610
Total	36.461	15.340	51.801

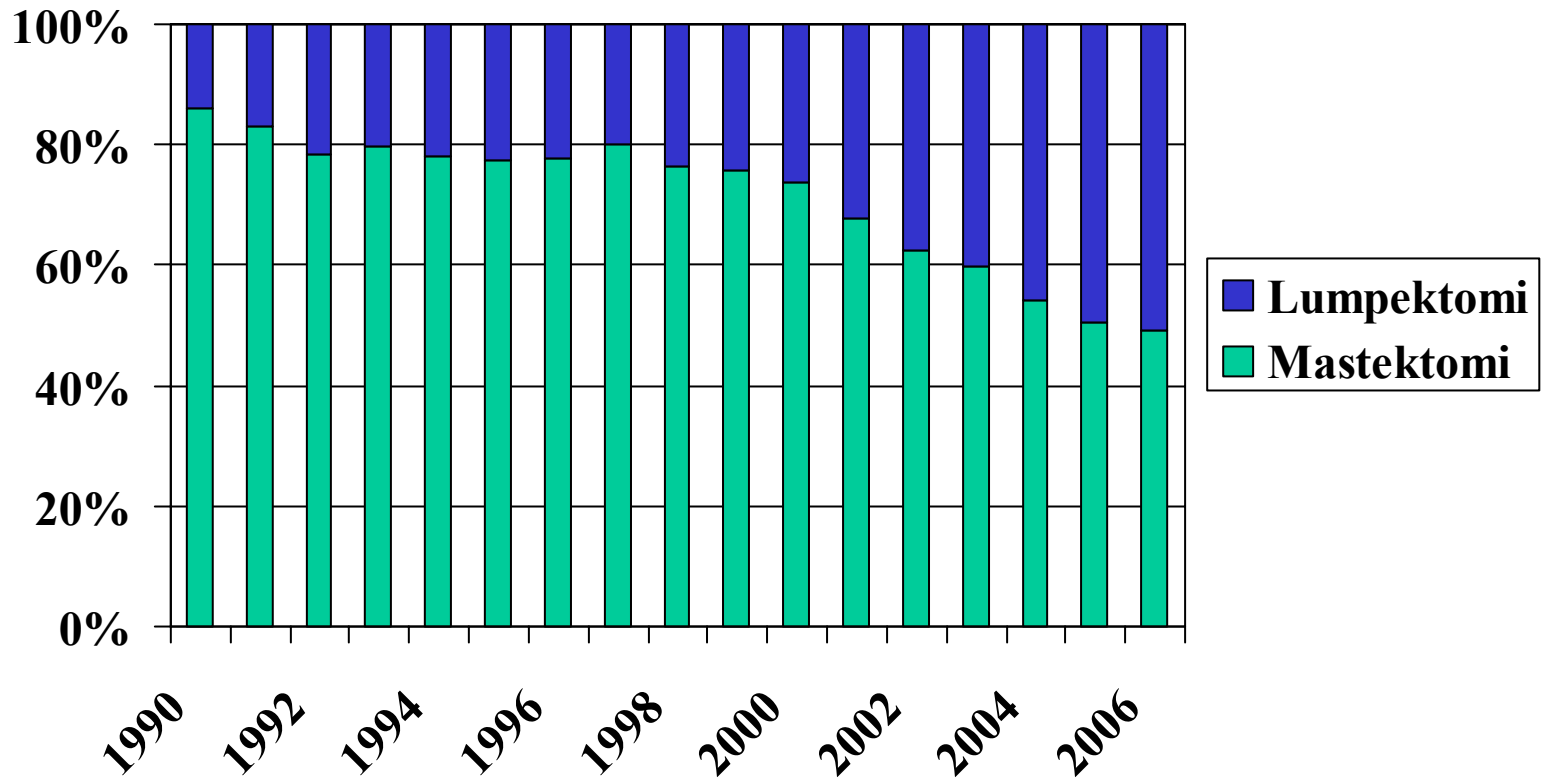
# Operationstype pr år

n=51.801



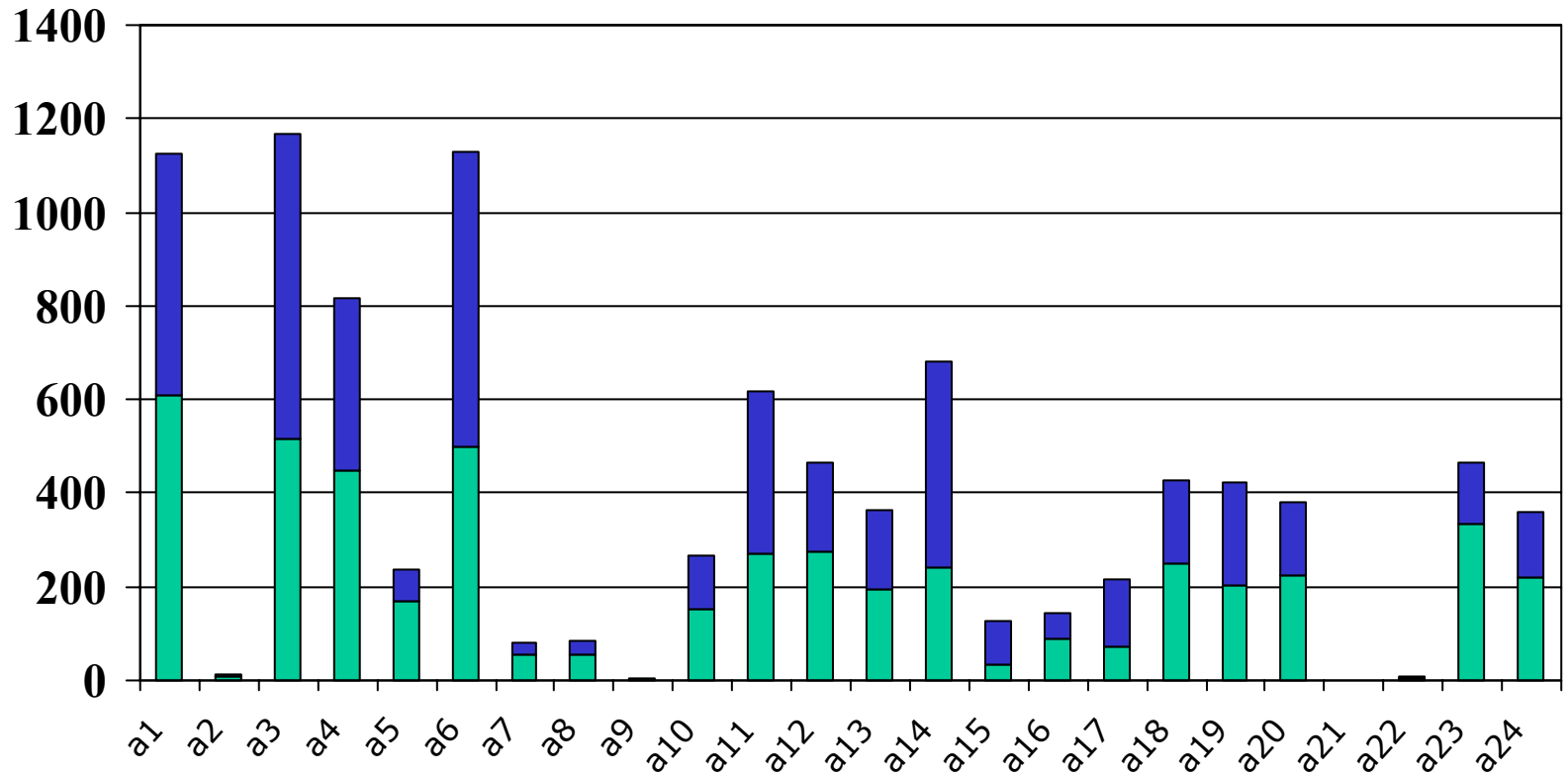
# Operationstype pr år

n=51.801



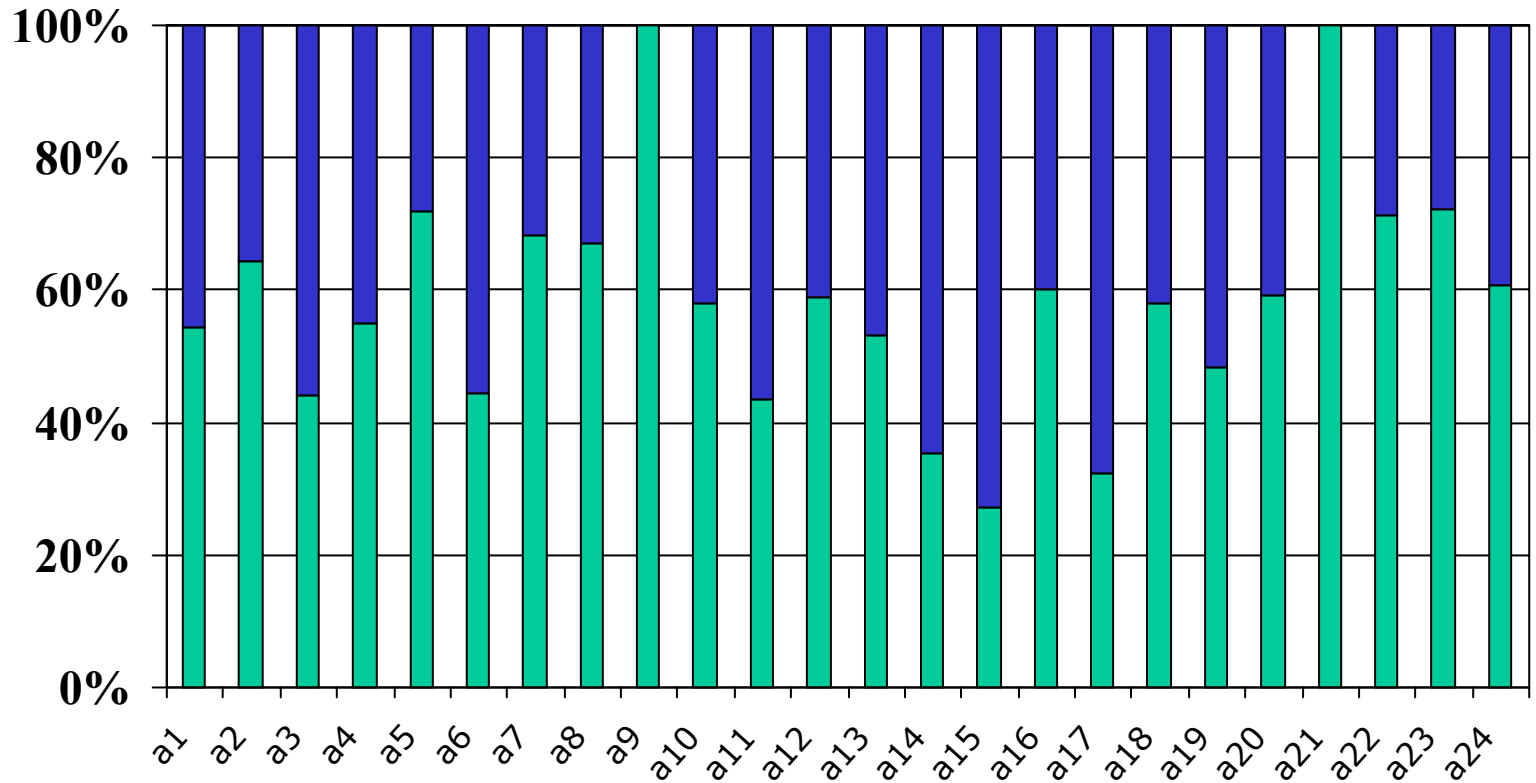
# Operationstype vs afdeling

2004-2006, n=9.610



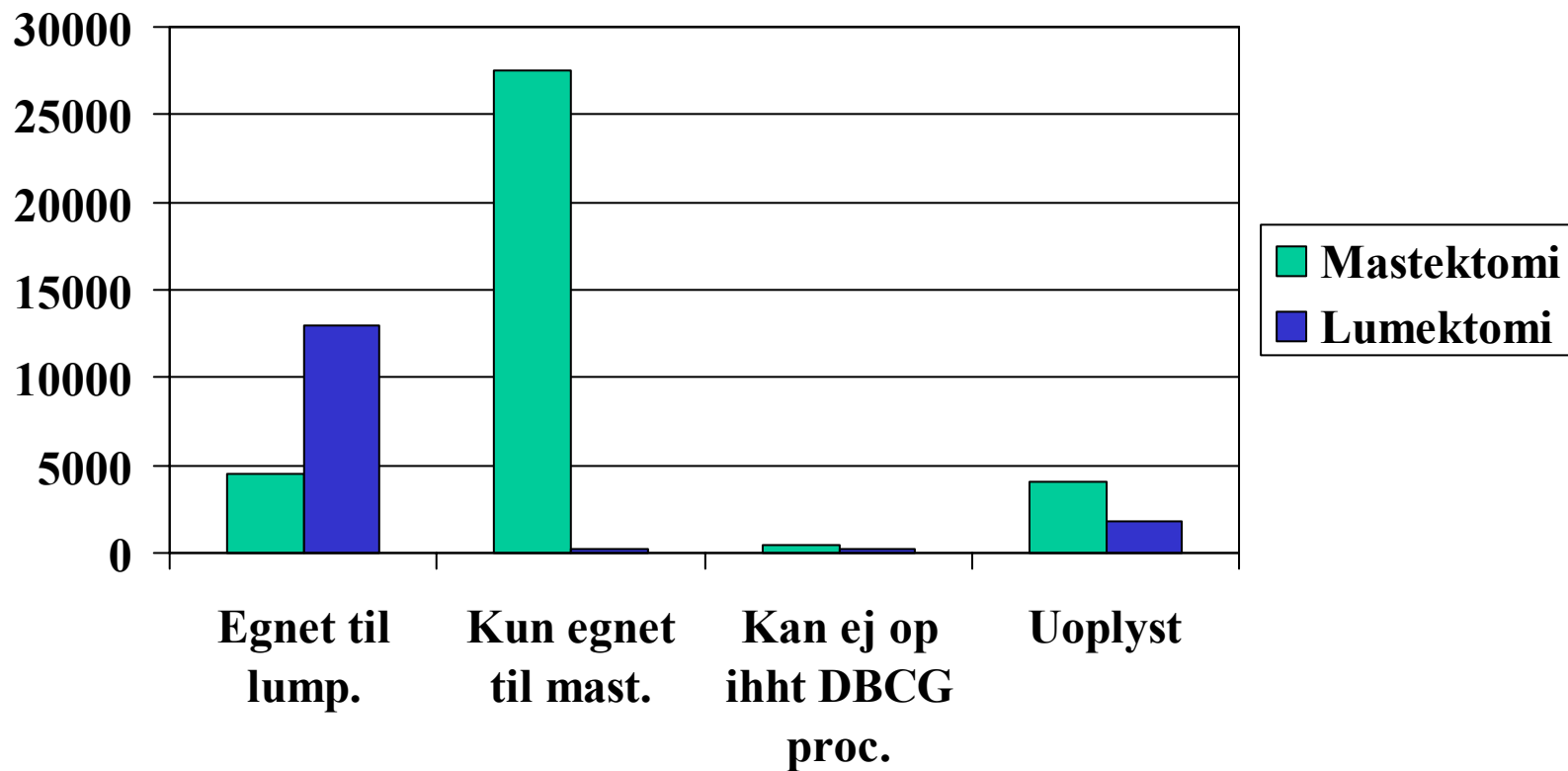
# Operationstype vs afdeling

2004-2006, n=9.610



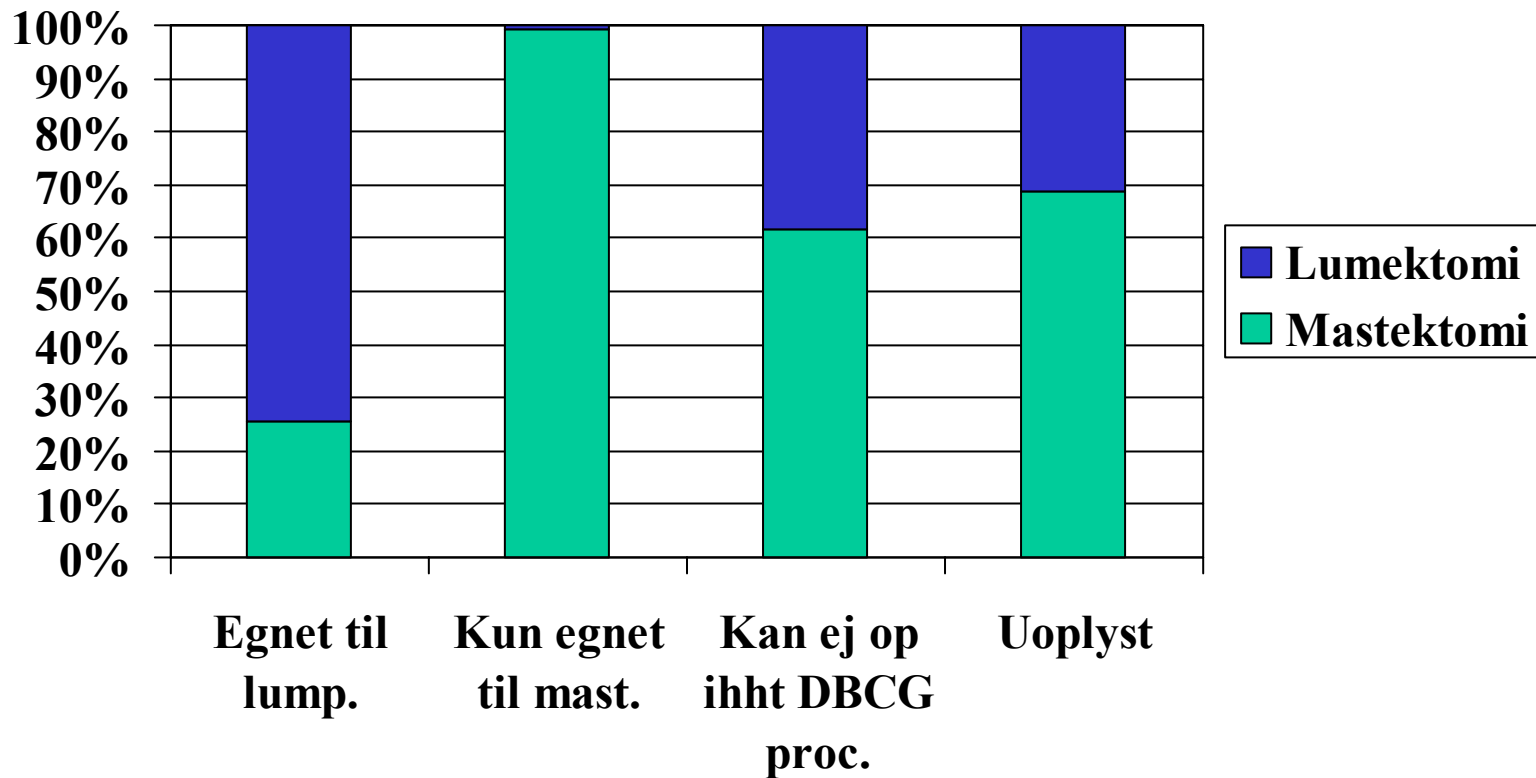
# Præoperativ klassifikation

n=51.801



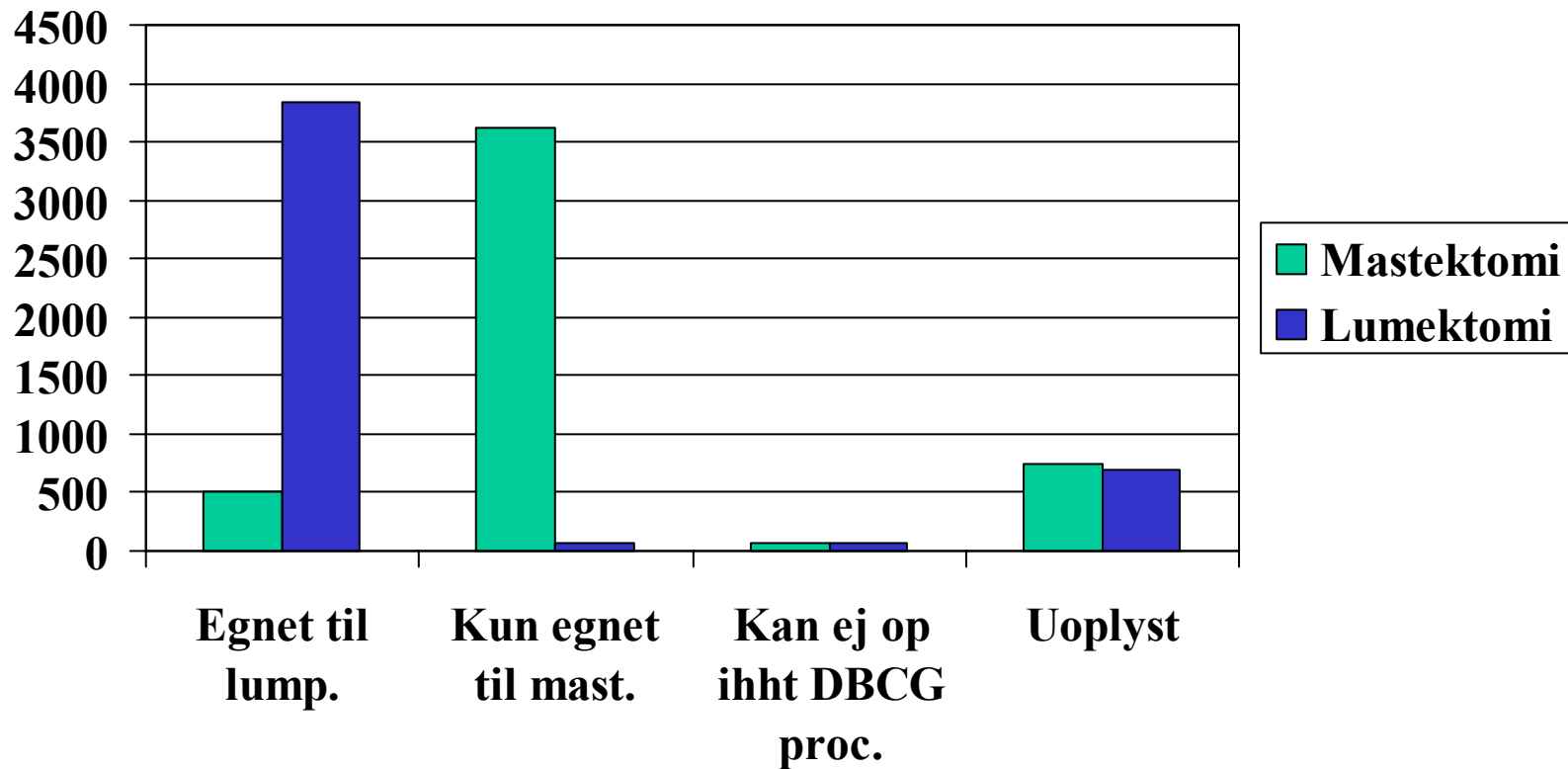
# Præoperativ klassifikation

n=51.801



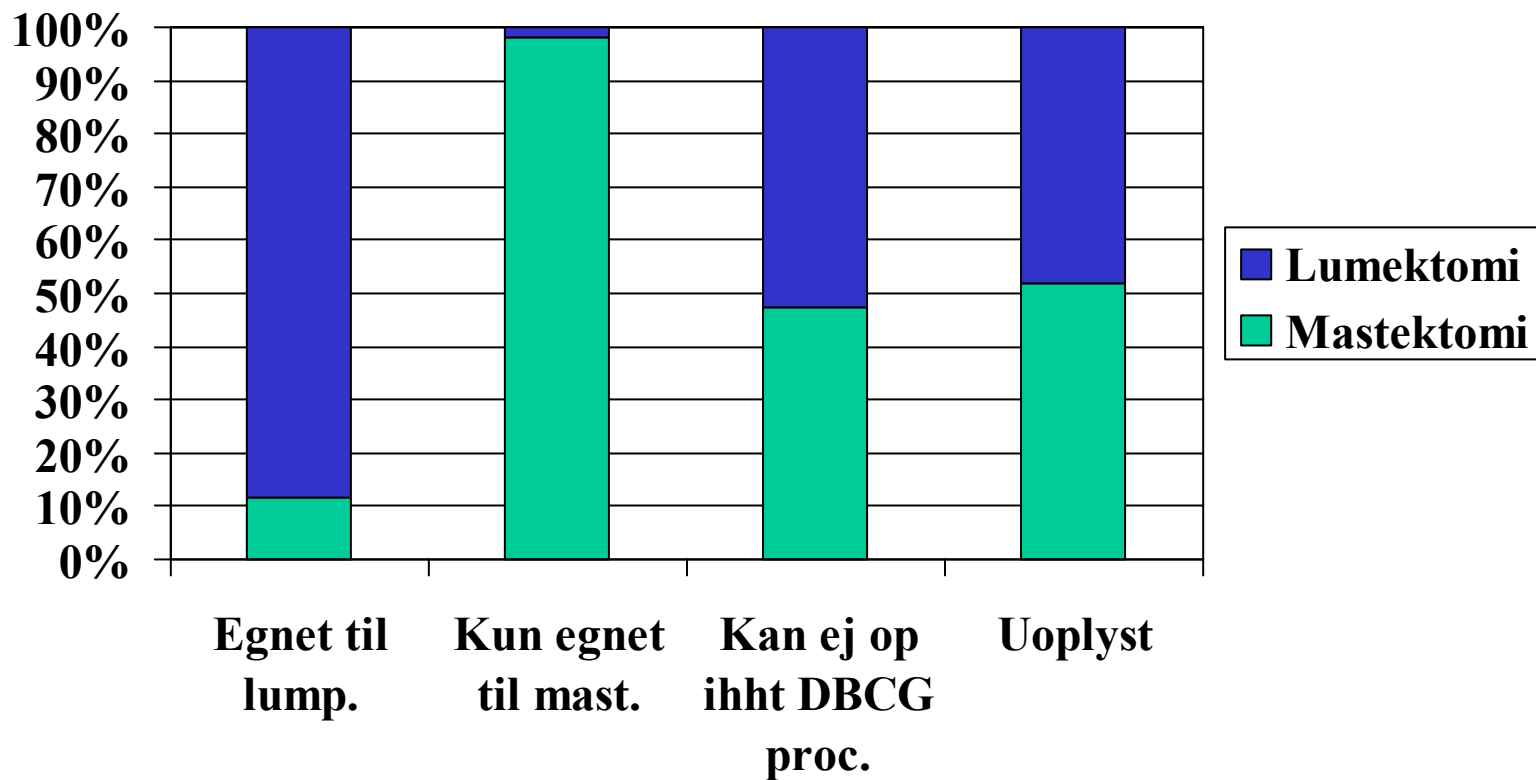
# Præoperativ klassifikation

2004-2006, n=9.610



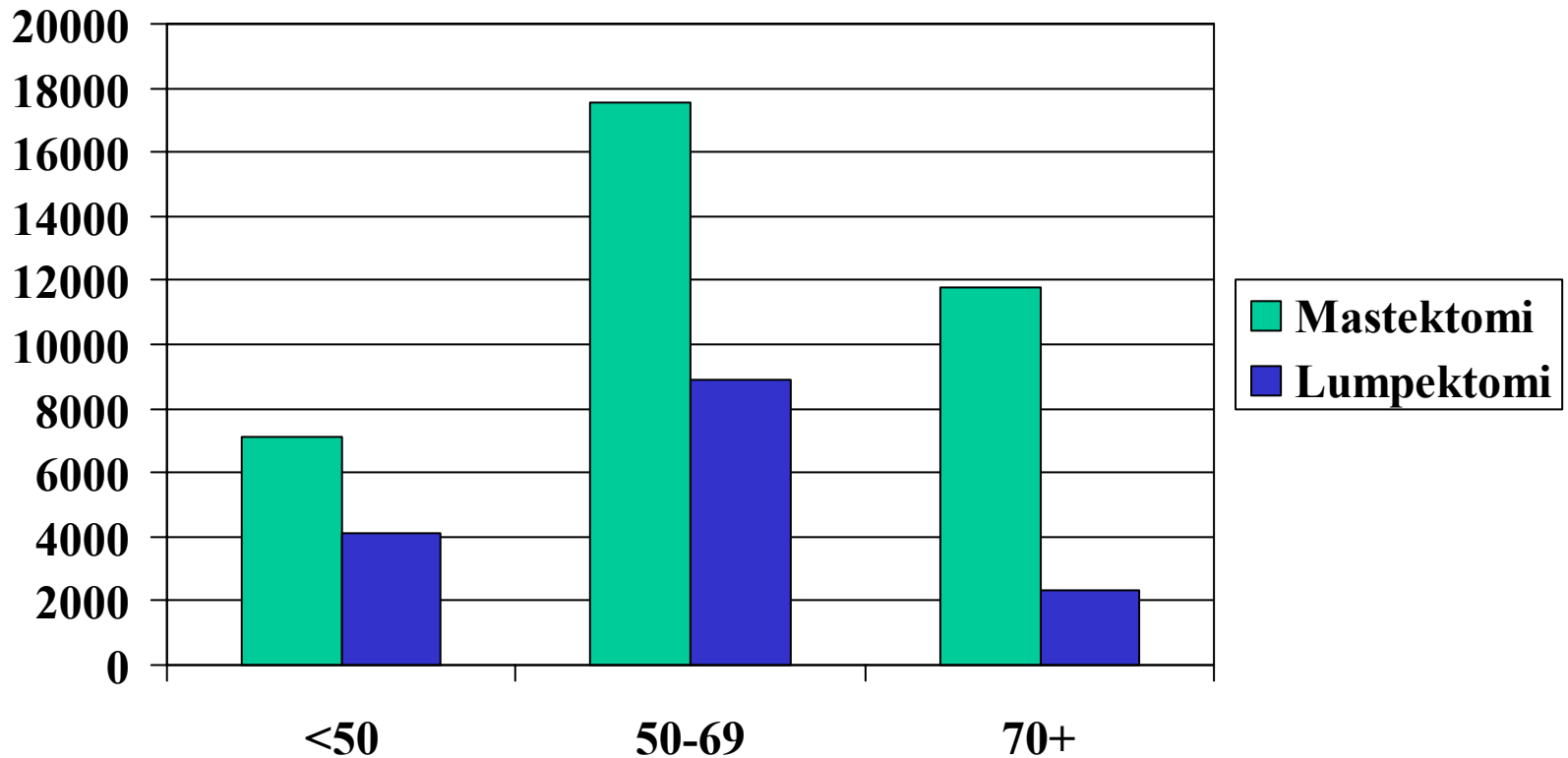
# Præoperativ klassifikation

2004-2006, n=9.610



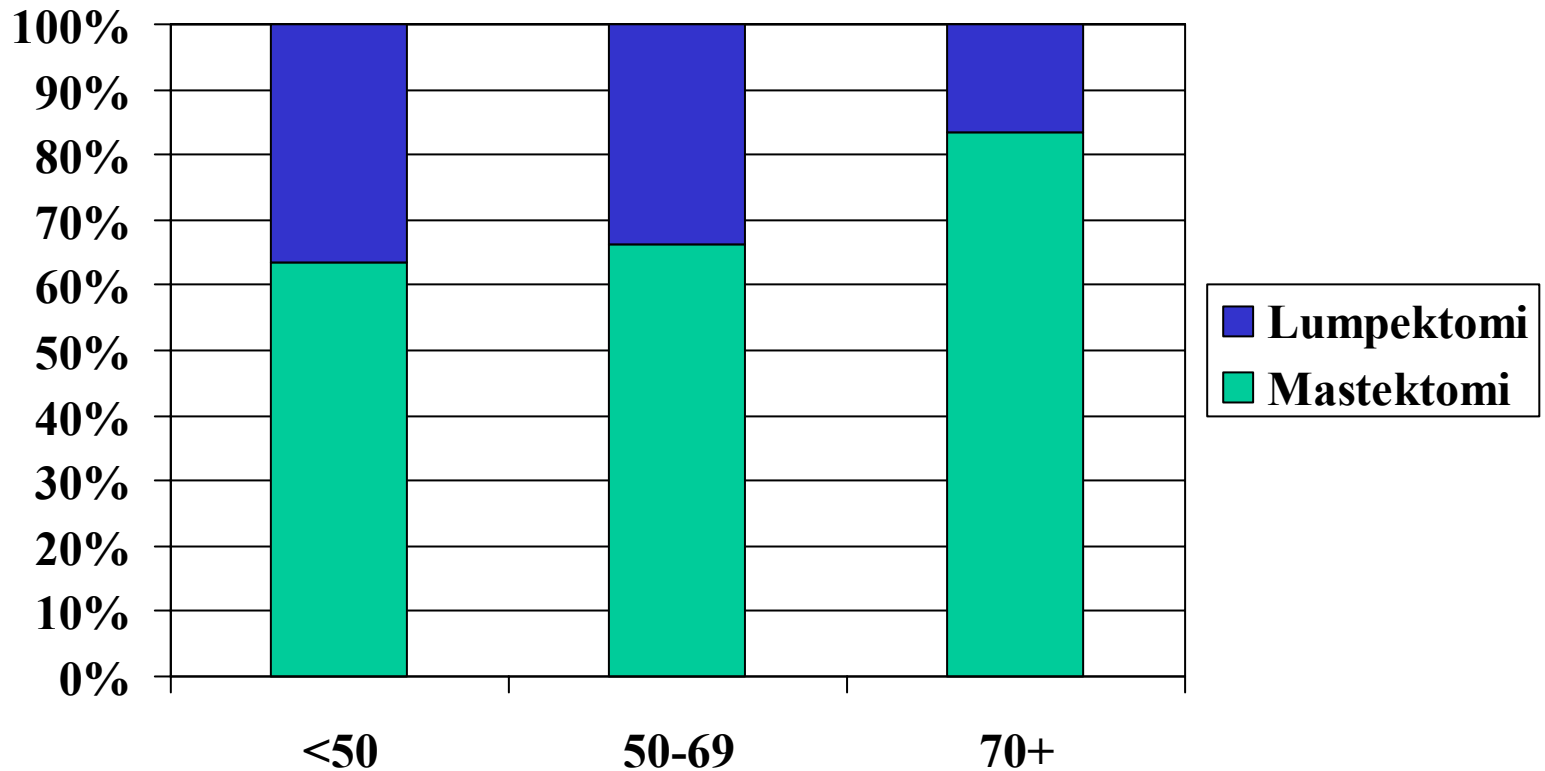
# Operationstype vs alder

n=51.801



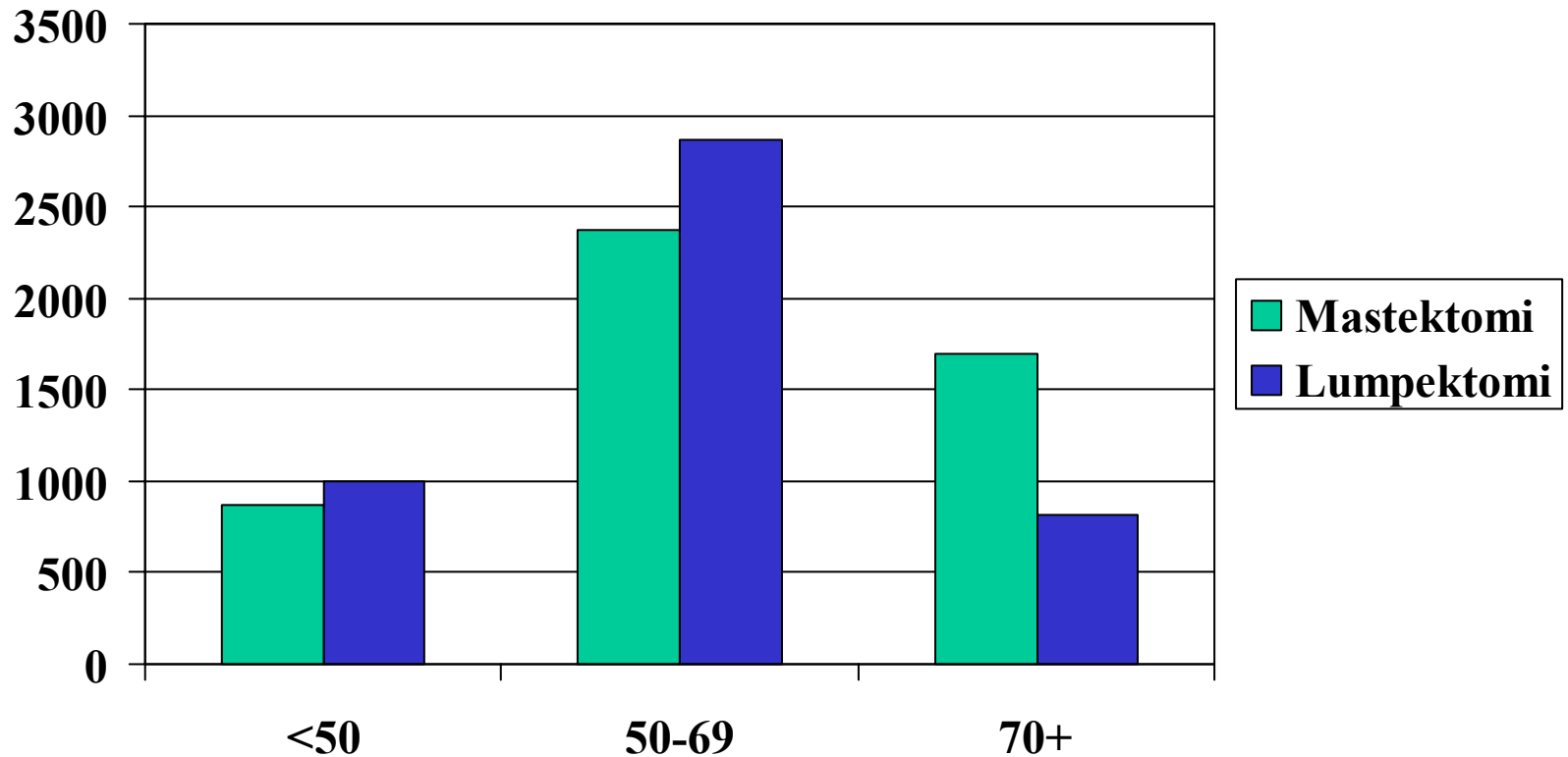
# Operationstype vs alder

n=51.801



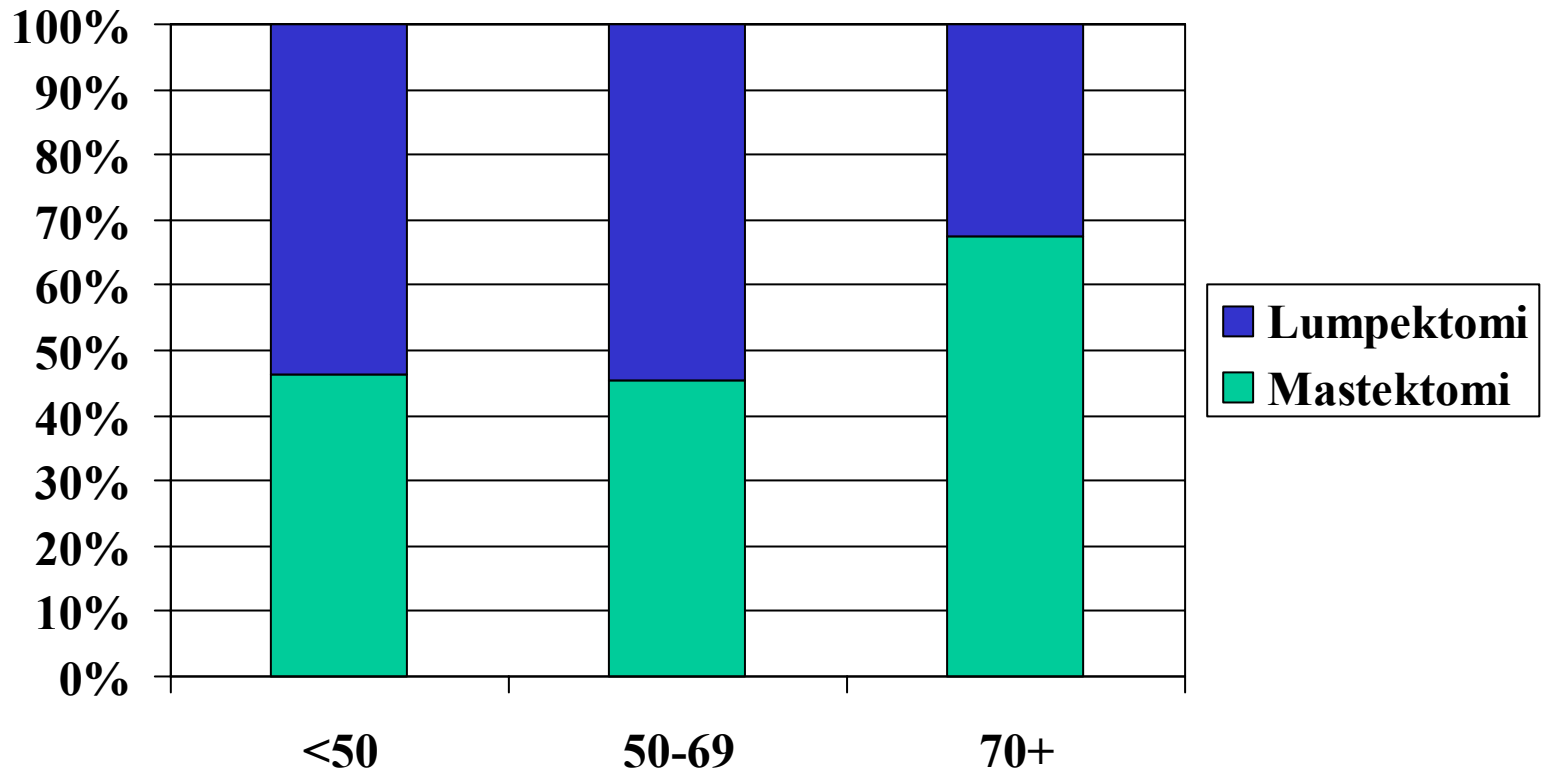
# Operationstype vs alder

2004-2006, n=9.610



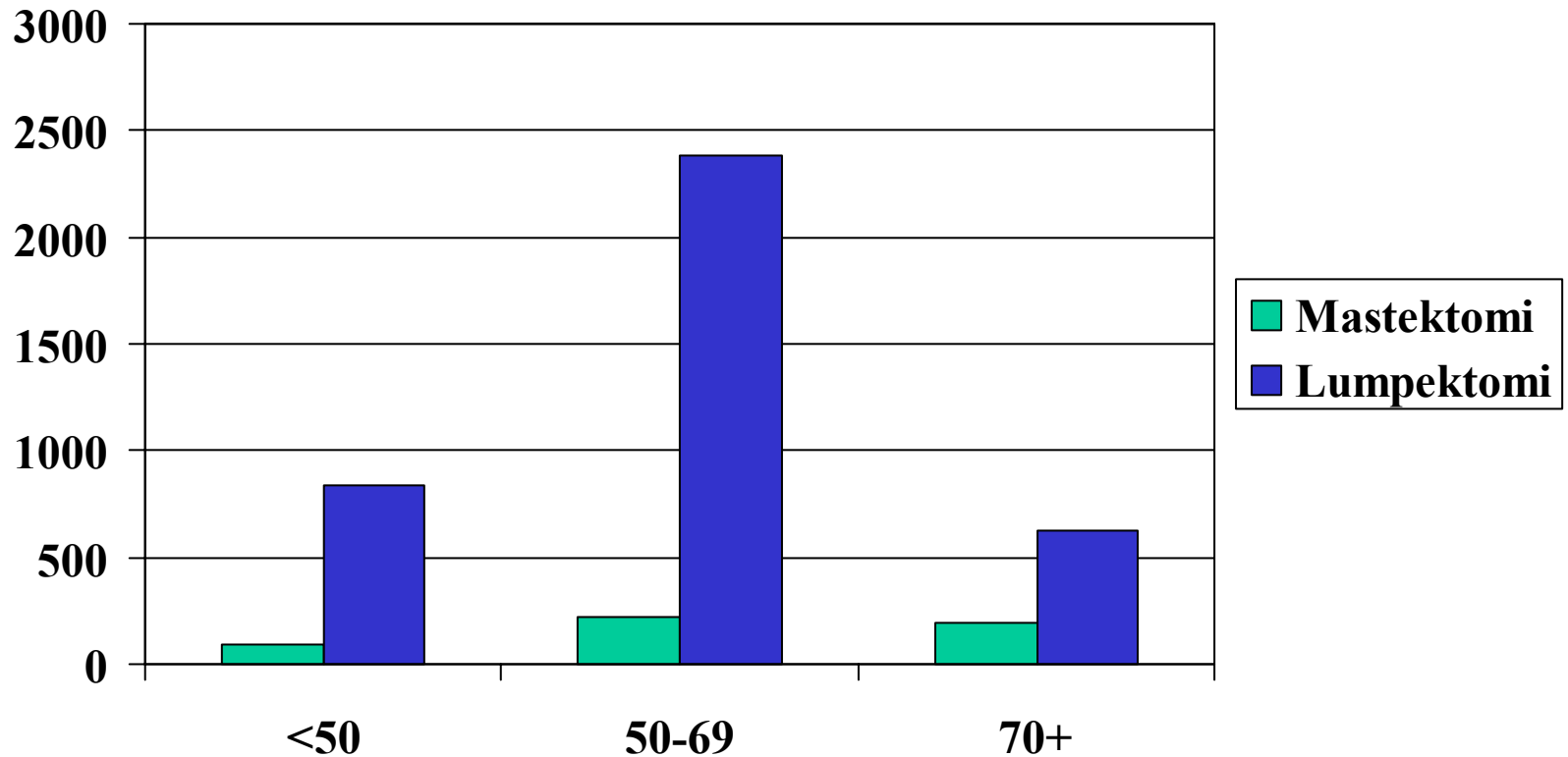
# Operationstype vs alder

2004-2006, n=9.610



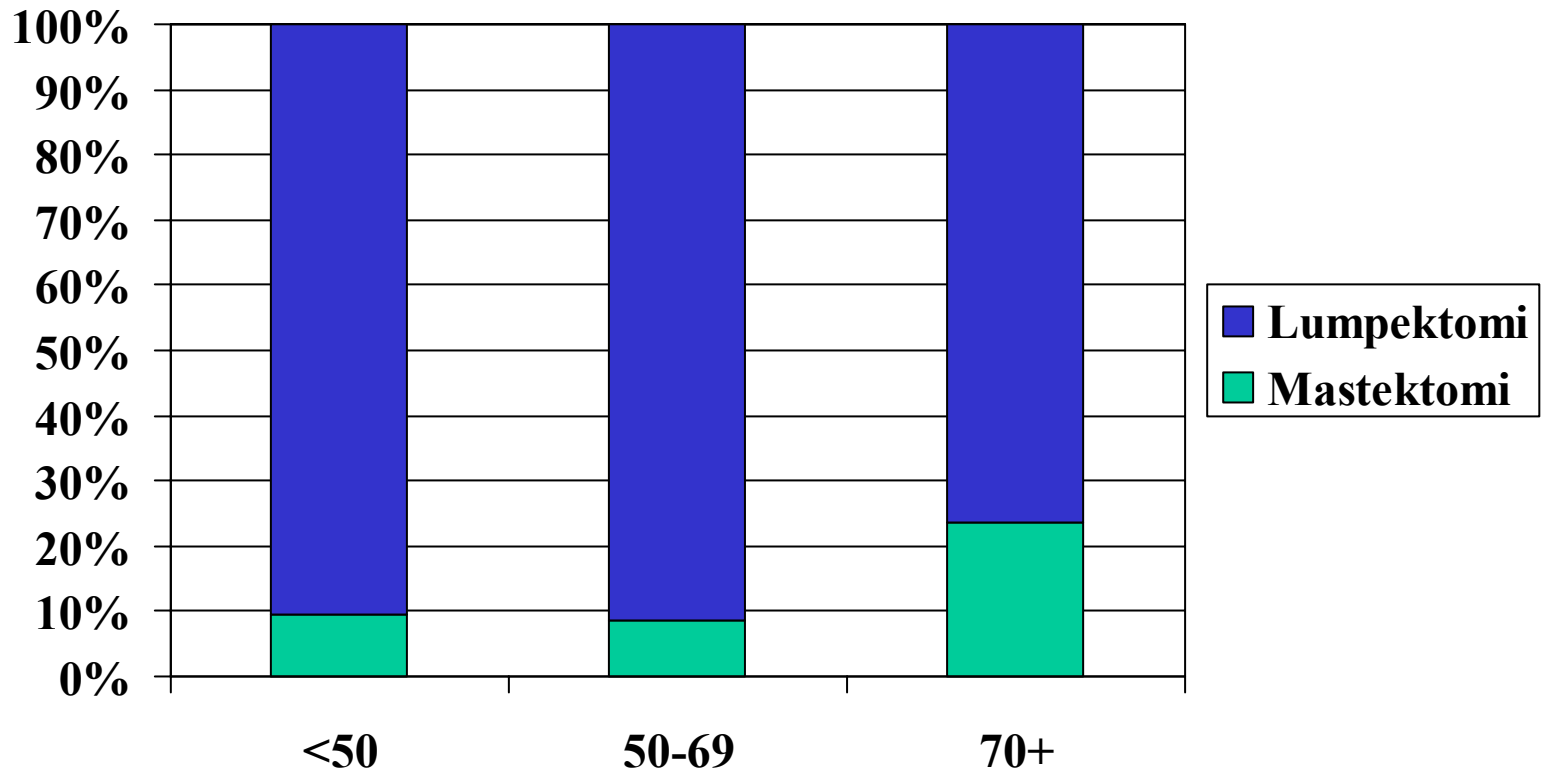
# Operationstype vs alder

2004-2006, egnet til lumpektomi, n=4.342



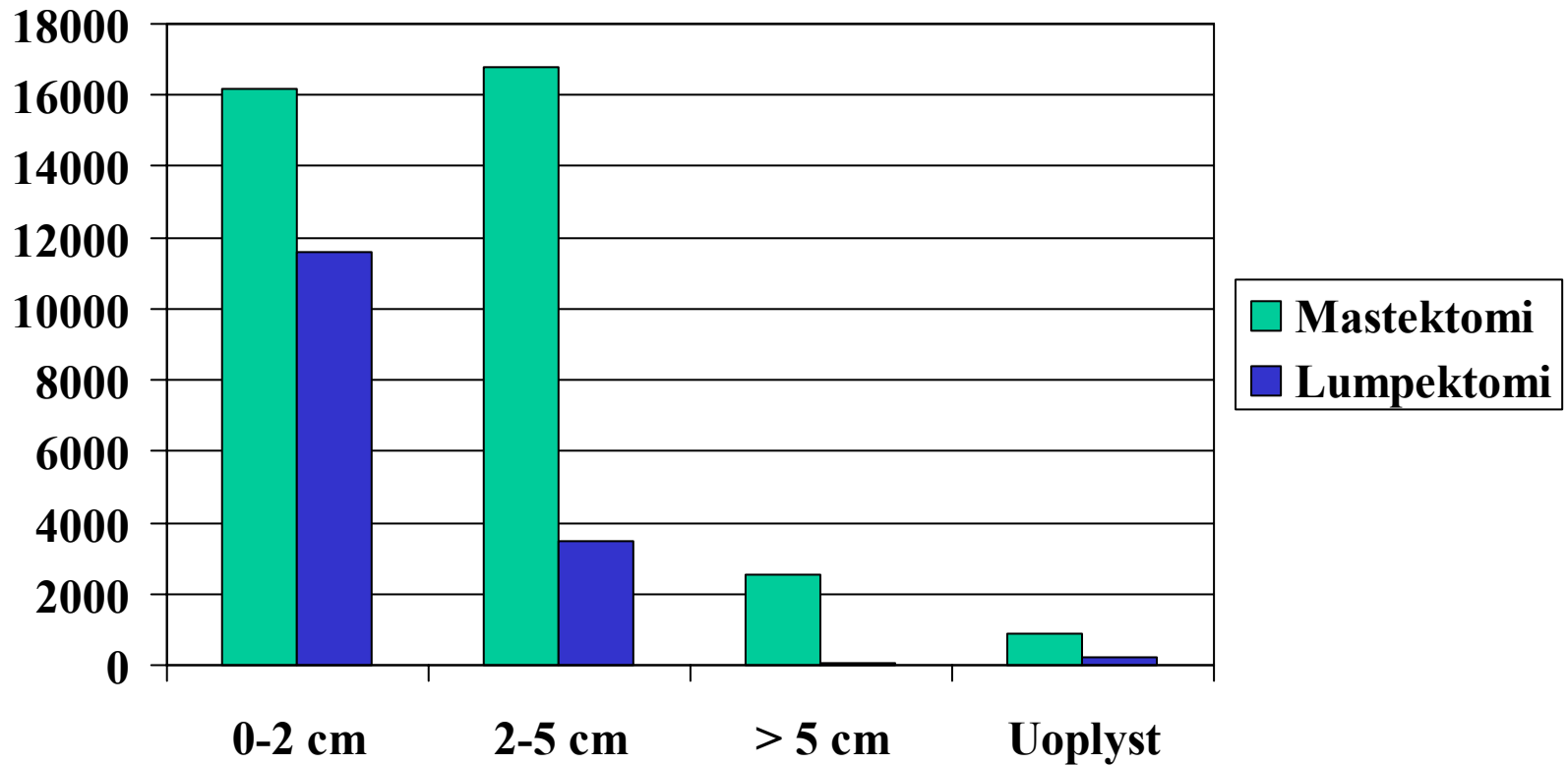
# Operationstype vs alder

2004-2006, egnet til lumpektomi, n=4.342



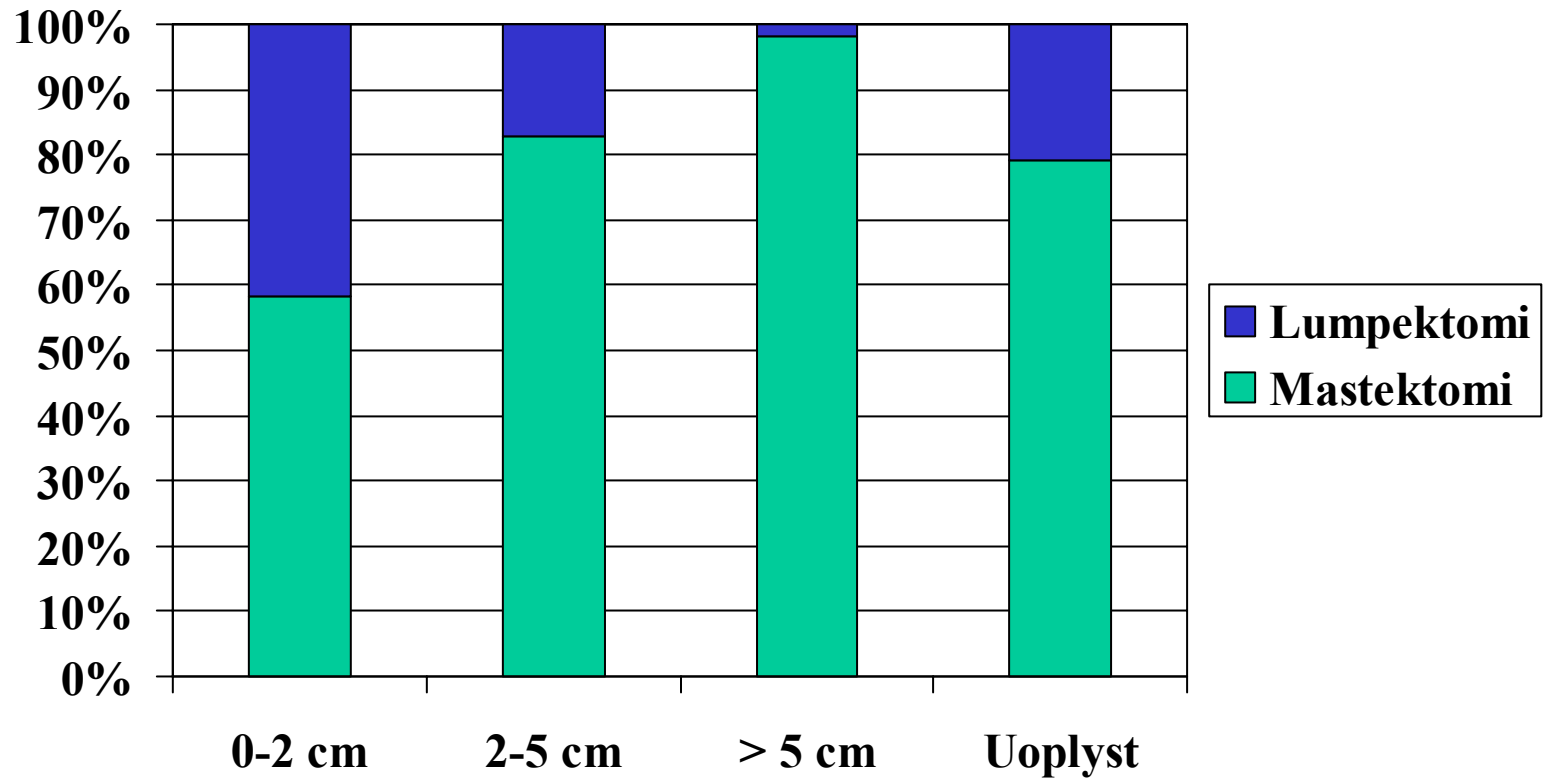
# Operationstype vs størrelse

n=51.801



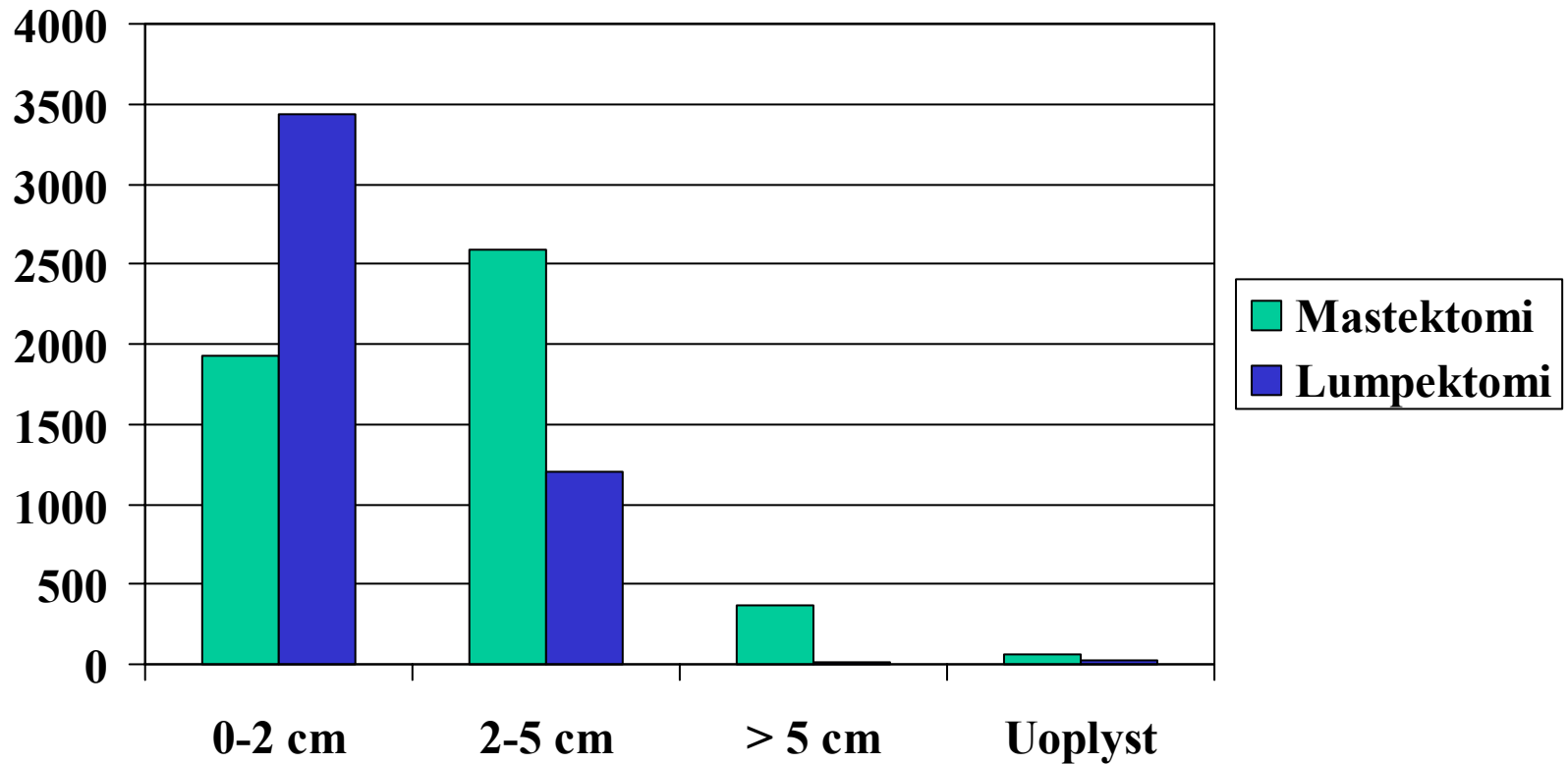
# Operationstype vs størrelse

n=51.801



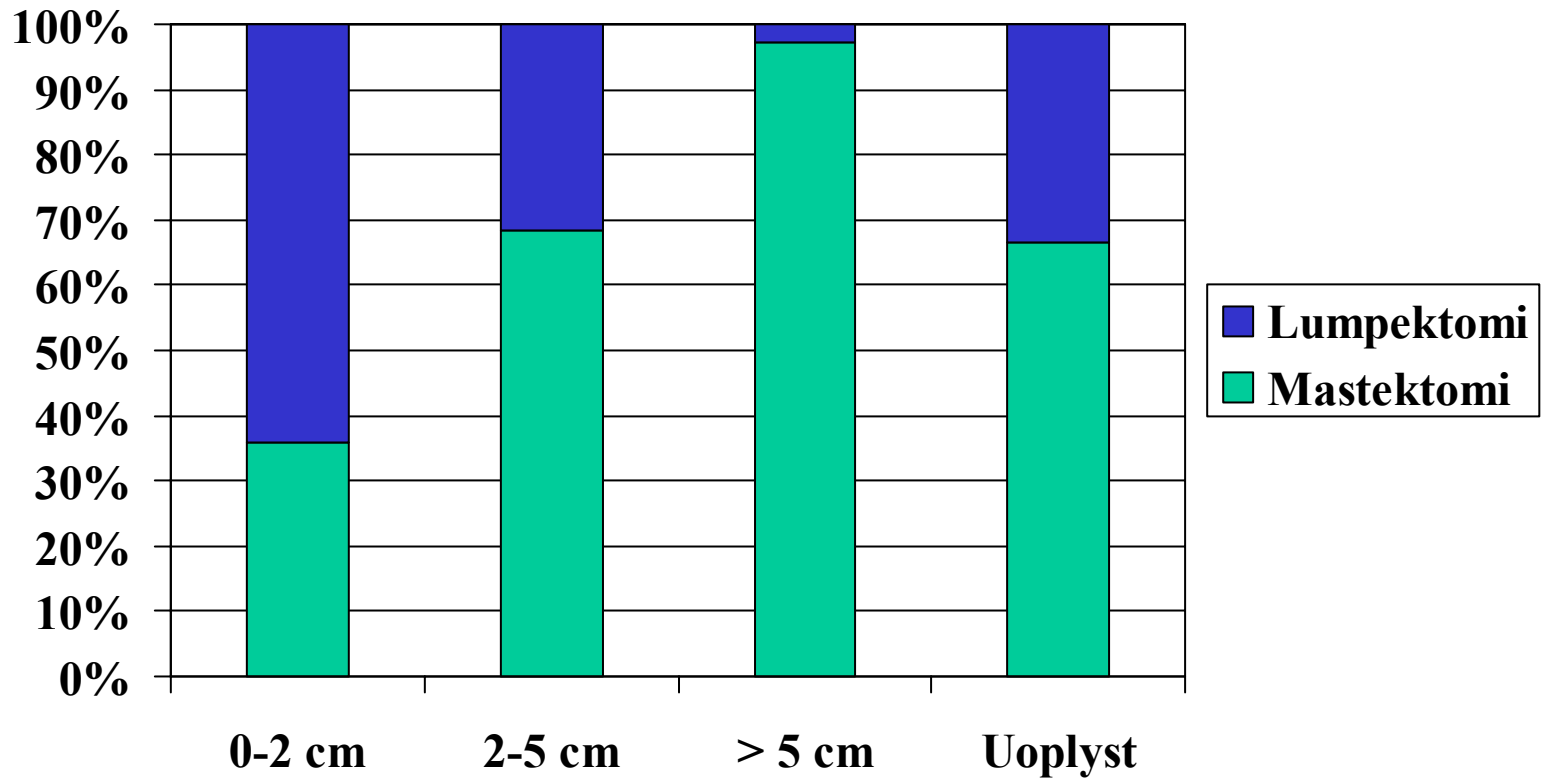
# Operationstype vs størrelse

2004-2006, n=9.610



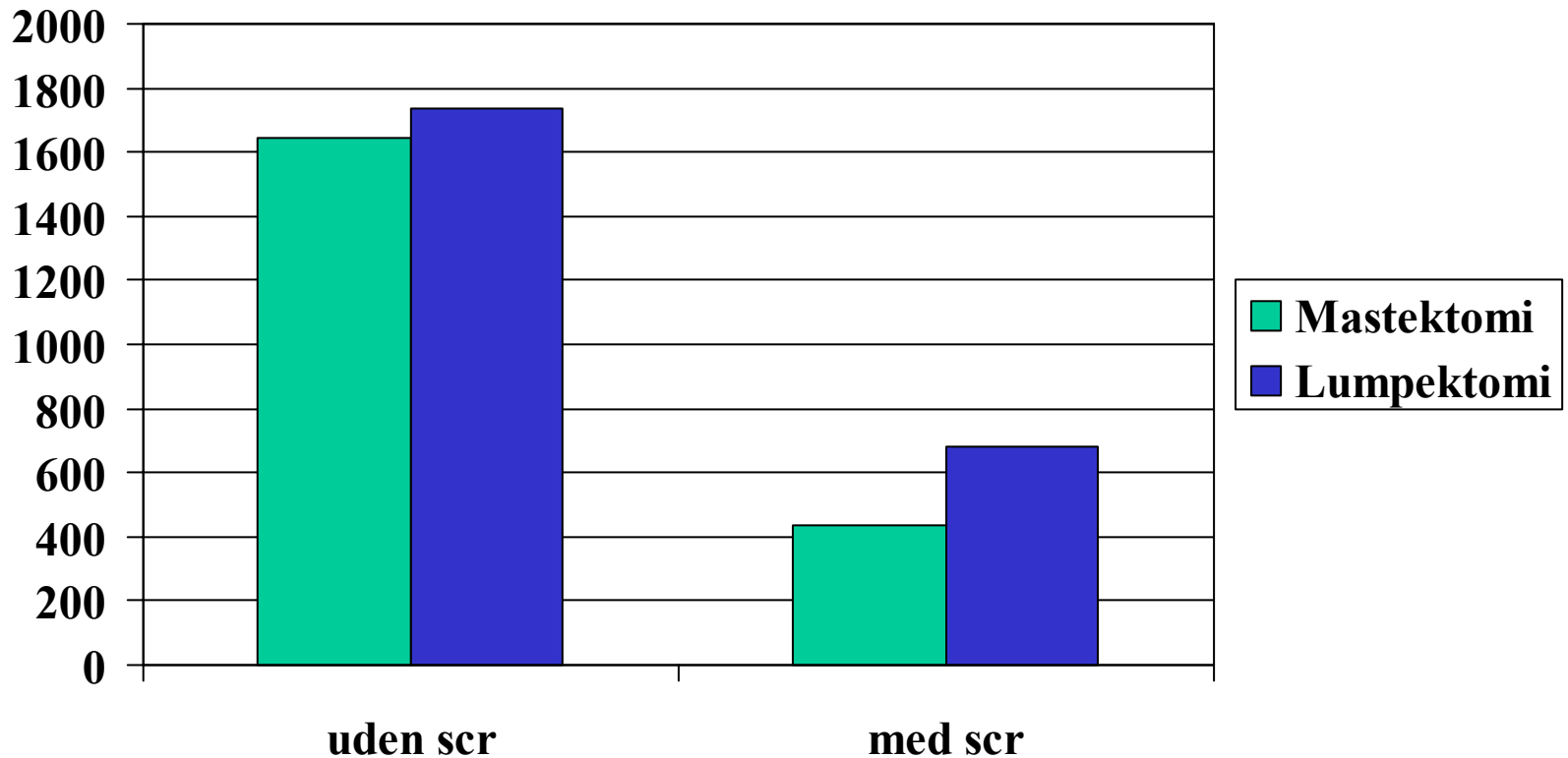
# Operationstype vs størrelse

2004-2006, n=9.610



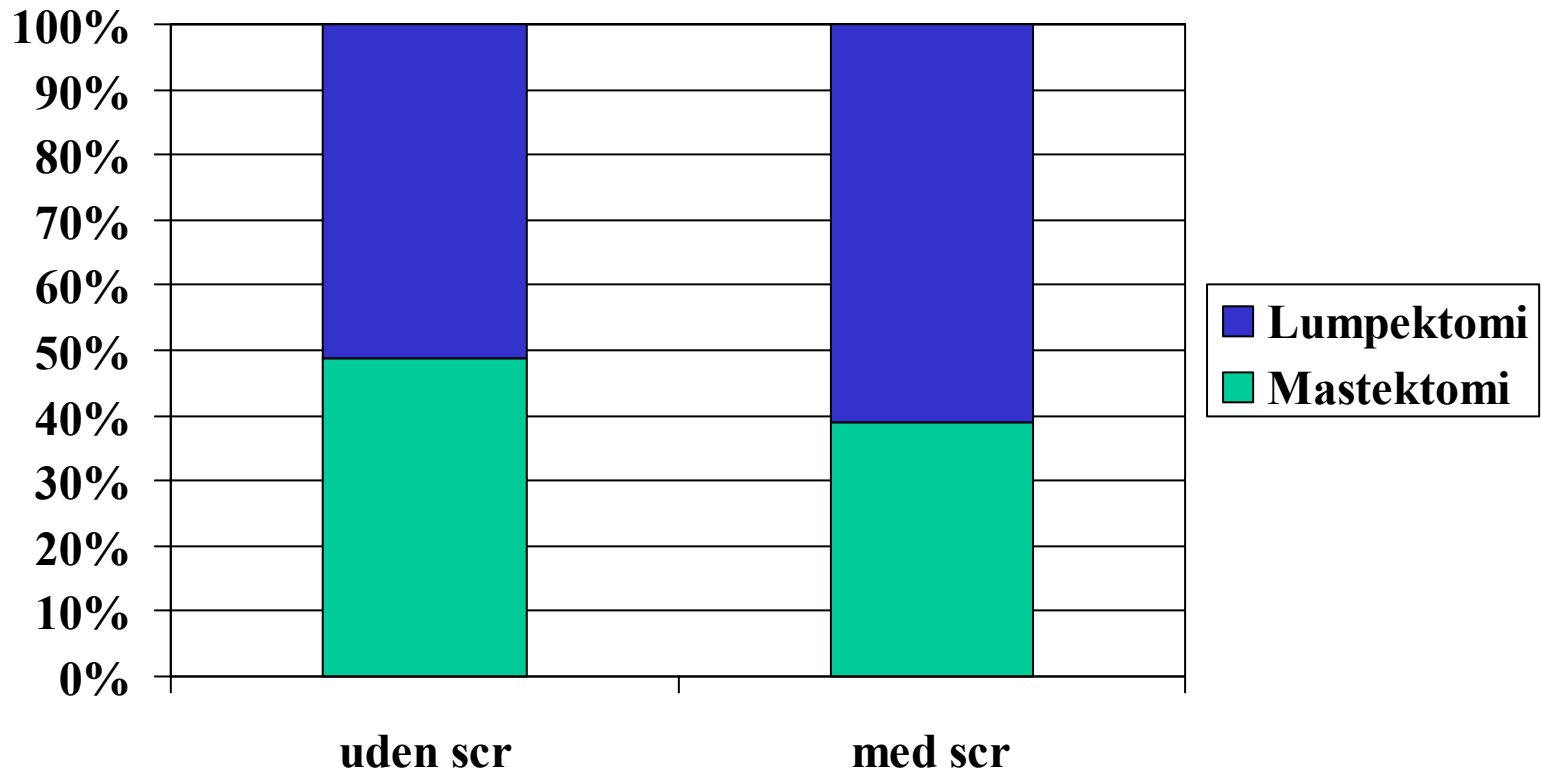
# Operationstype vs screeningsamt

2004-2006, 50-69 år, n=4.496



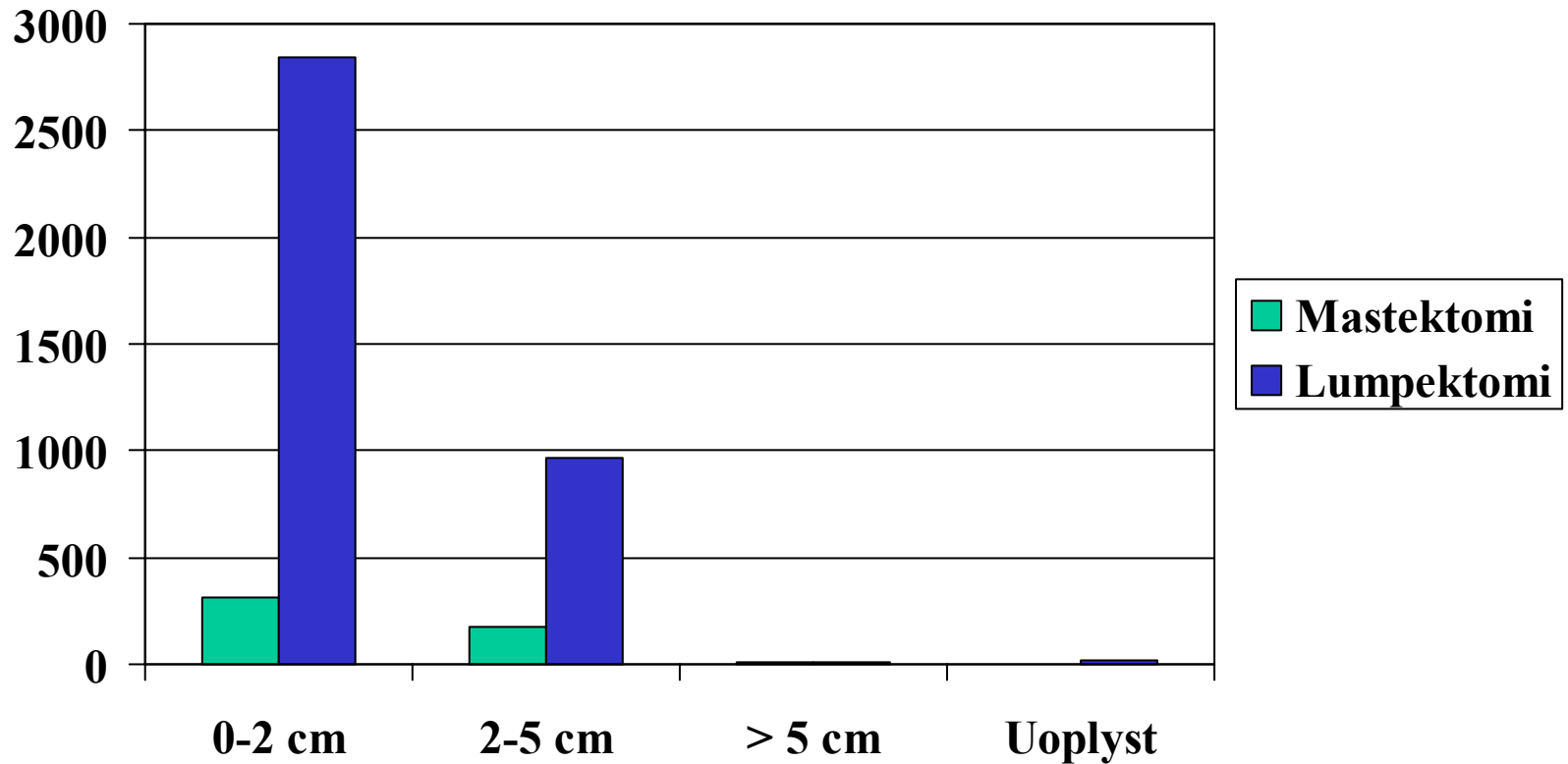
# Operationstype vs screeningsamt

2004-2006, 50-69 år, n=4.496



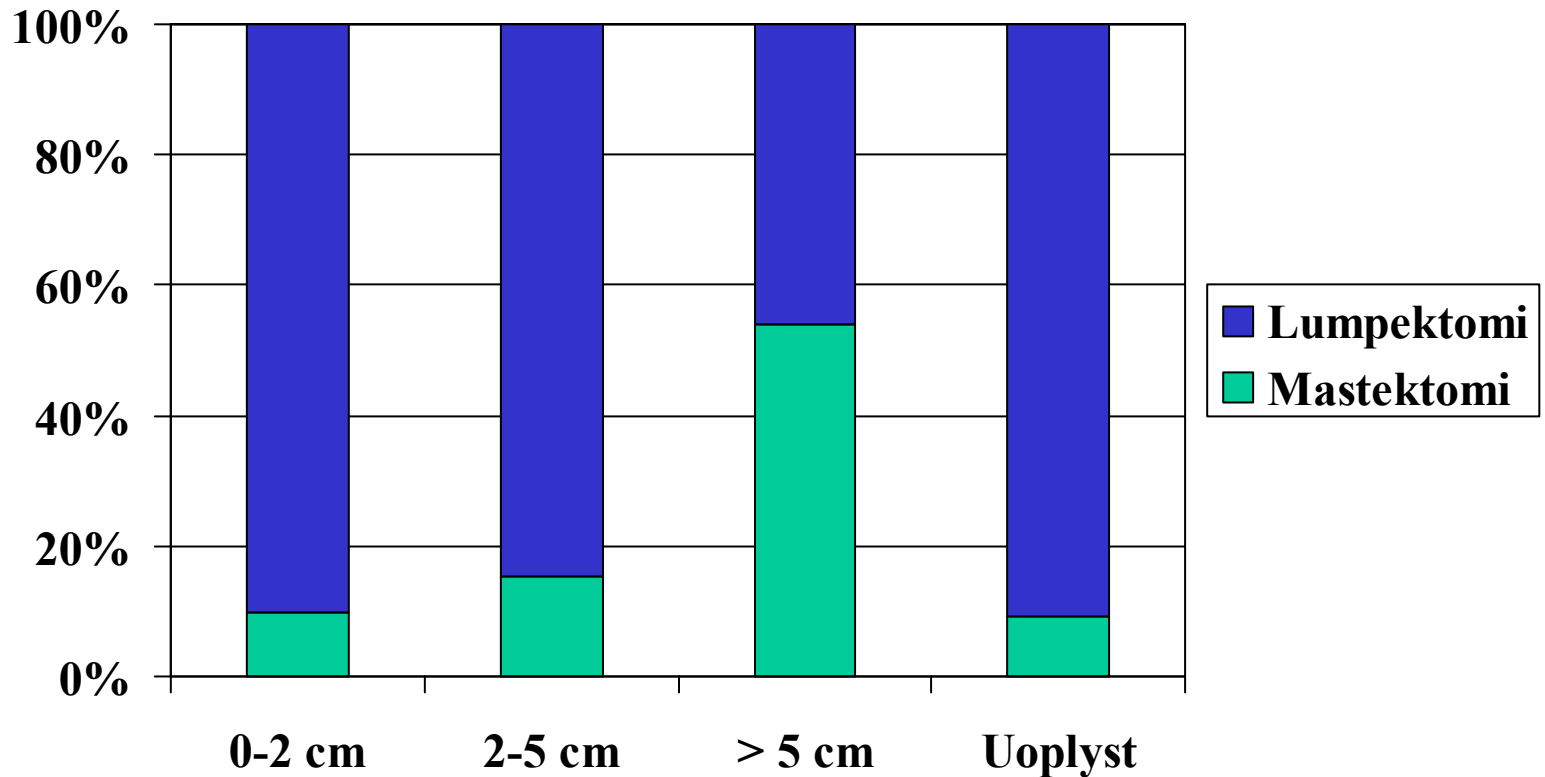
# Operationstype vs størrelse

2004-2006, egnet til lumpektomi, n=4.342



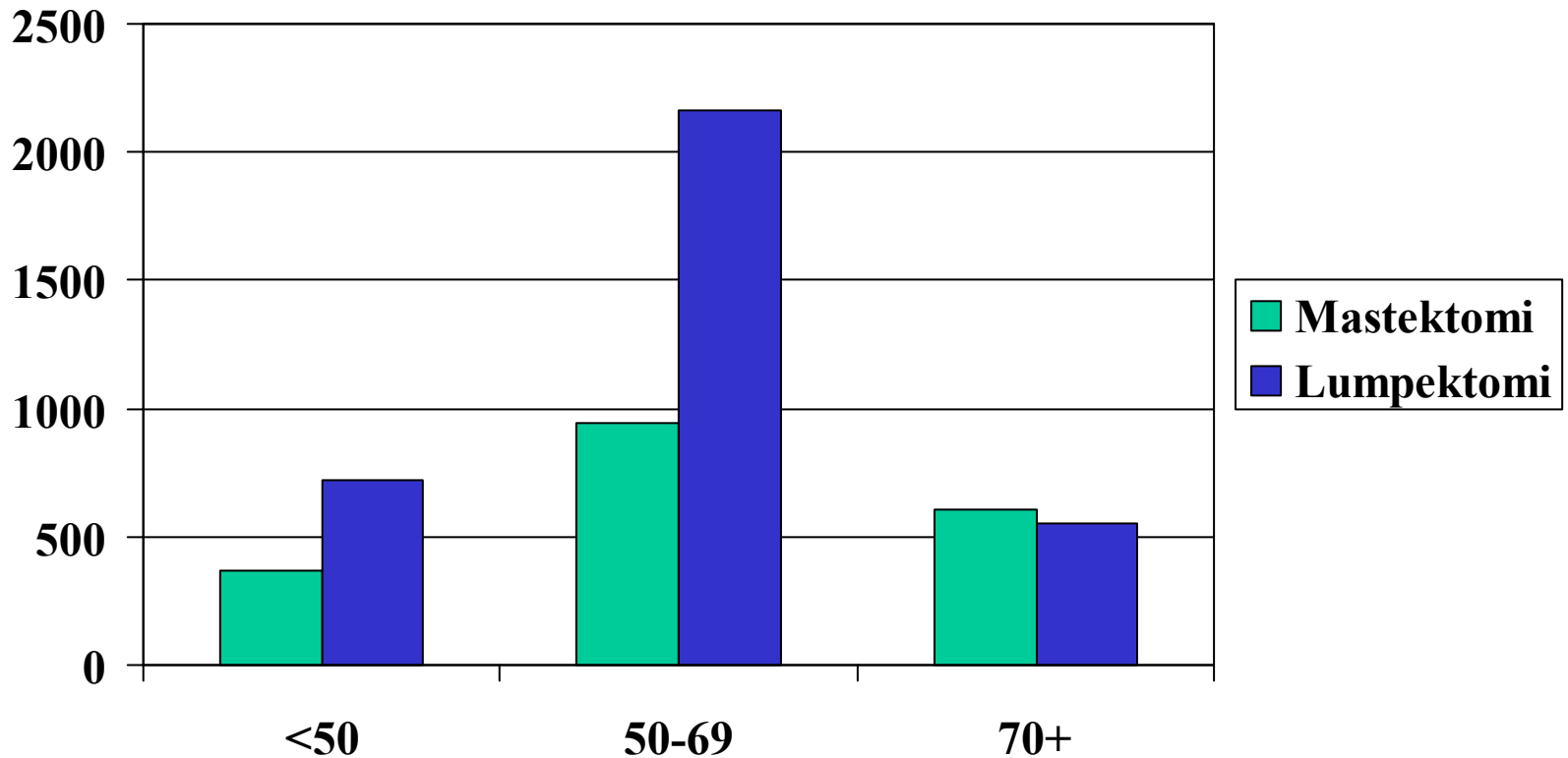
# Operationstype vs størrelse

2004-2006, egnet til lumpektomi, n=4.342



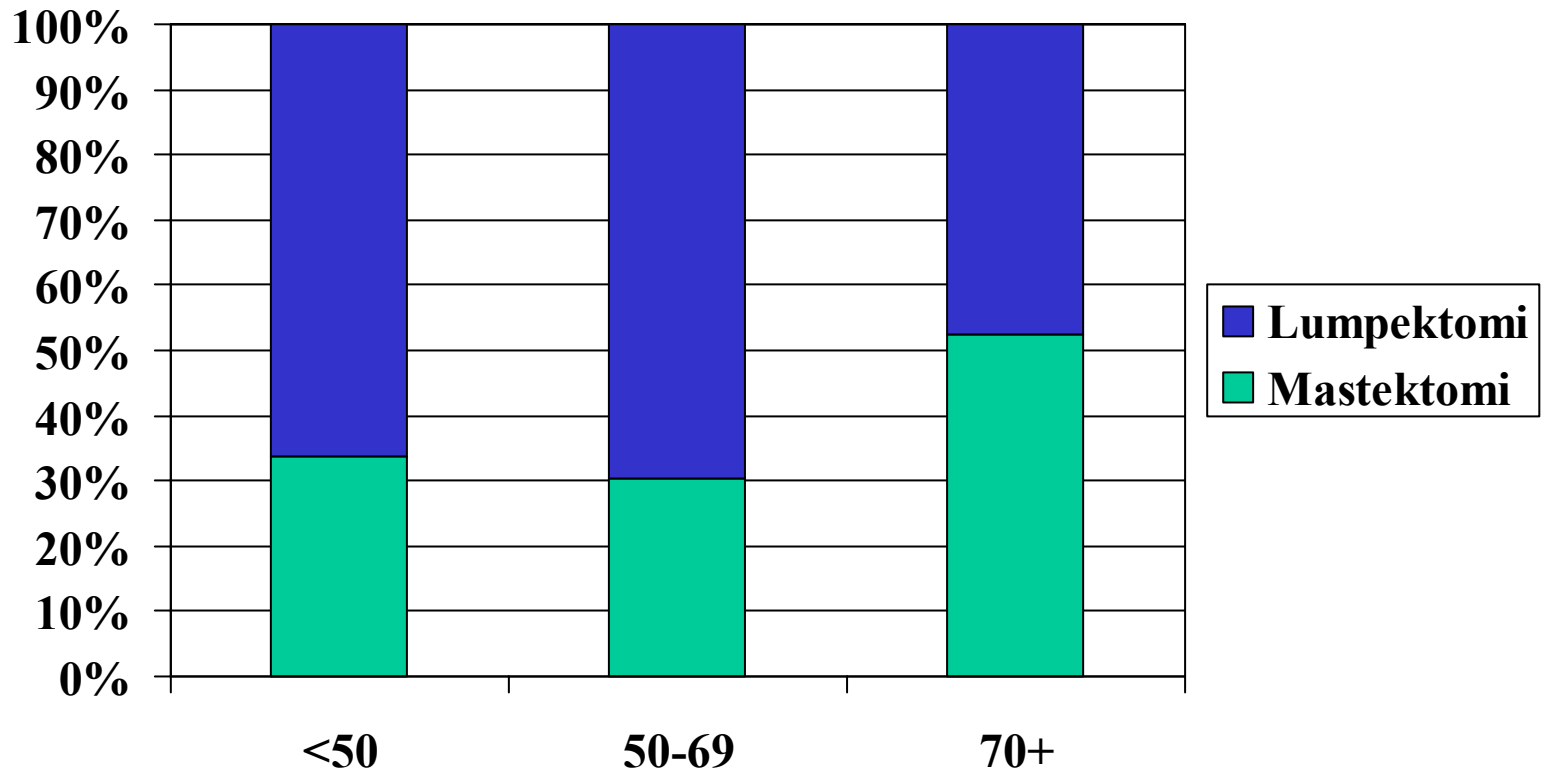
# Operationstype vs alder

2004-2006, 0-2 cm, n=5.361



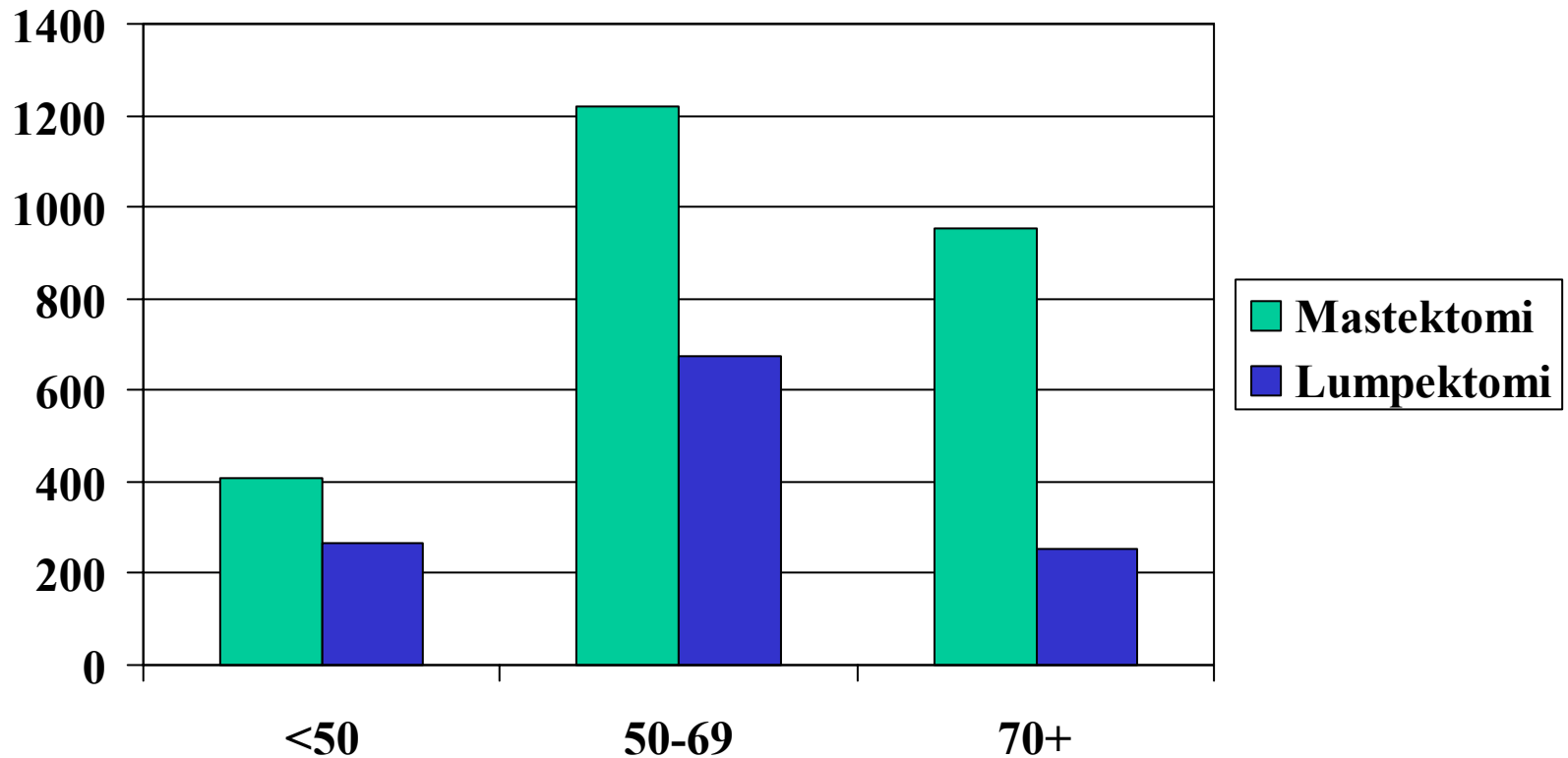
# Operationstype ifht. alder

2004-2006, 0-2 cm, n=5.361



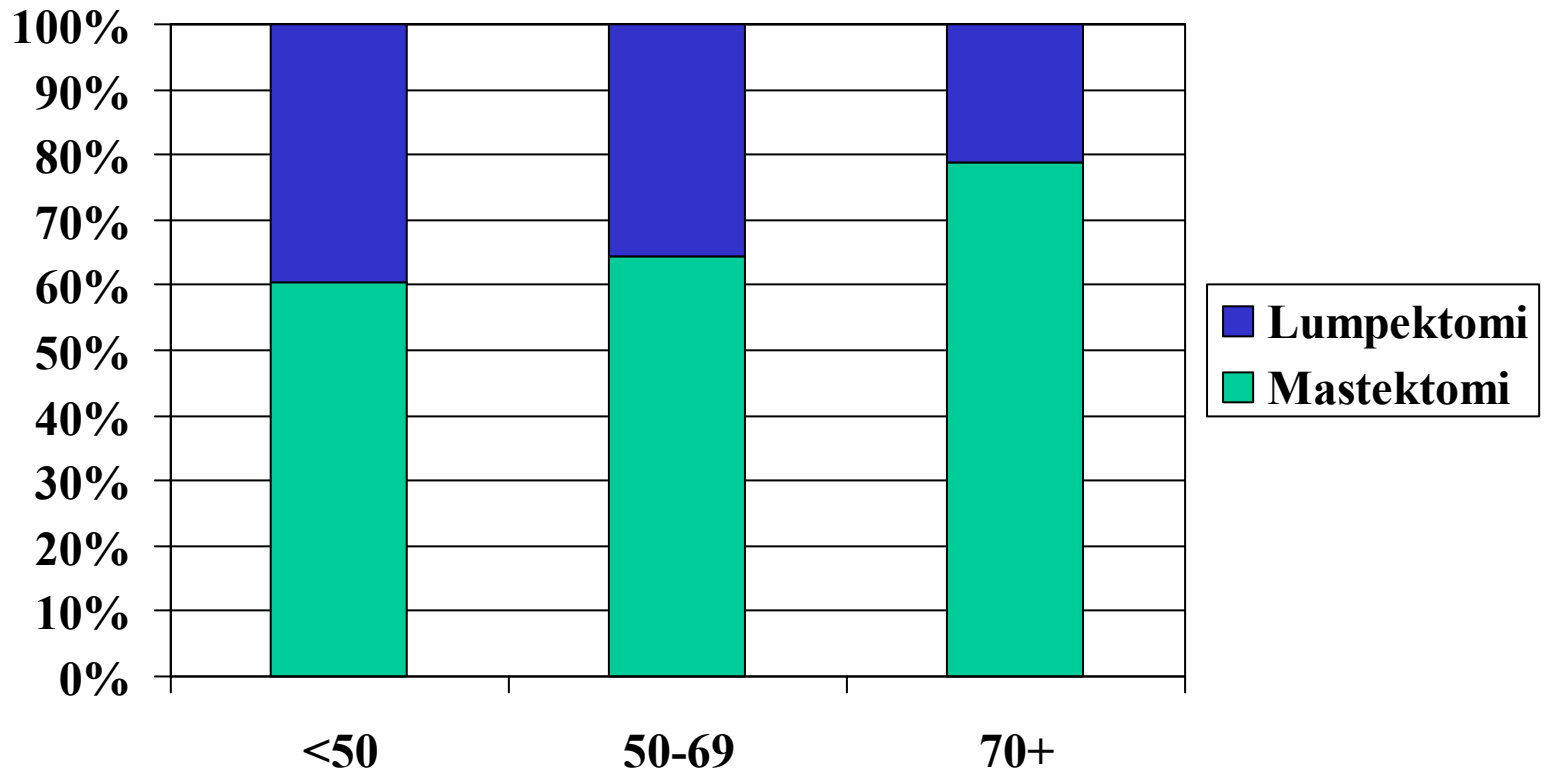
# Operationstype vs alder

2004-2006, 2-5 cm, n=3.781



# Operationstype vs alder

2004-2006, 2-5 cm, n=3.781



# Indikatorer

- Indikator 6

Brystkræftpatienter, som modtager  
brystbevarende operation

- Indikator 10

Lokalt recidiv ved brystbevarende terapi

[www.dbcg.dk](http://www.dbcg.dk)

Indikatorrapport

# Indikator 6

- 20-75 år
- 0-2, 2-5 cm
- DBCG protokol
- WHO, præop.
- 2005-2006

	0-2cm	2-5 cm
Mast.	833	1.028
Lump.	1.945 0,70	665 0,39
Ref.	>0,5	>0,20

# Lokalt recidiv ved brystbevarende terapi

**Nævner:** Antal kvinder, der modtager BCT med mindst 5 års observation efter diagnosetids-punkt.

**Tæller:** Antal kvinder, der udvikler lokalt recidiv i mamma som første hændelse +/- simultant fjernrecidiv (event) efter BCT inden for et tidsinterval på 5 år fra diagnosetidspunkt.

# Lokalt recidiv

- DBCG protokol
- 0-5 cm
- 1990-2000
- Lumpektomi
- 5.408 patienter
- Opgjort 5 år efter operation

# Lokalt recidiv

	< 35 år	35+ år	Total
Cikatrice	5 (3%)	24 (1/2%)	29
Res.mam.	18 (11%)	102 (2%)	120
Loco-reg.	3 (2%)	97 (2%)	100
Anden off	58 (35%)	1.460 (28%)	1.518
At-risk	84 (50%)	3.557 (68%)	3.641
Total	168	5.240	5.408

# Lokalt recidiv

operation 1990-1995

	< 35 år	35+ år	Total
Cikatrice	3 (3%)	13 (1%)	16
Res.mam.	12 (14%)	46 (2%)	58
Loco-reg.	2 (2%)	69 (3%)	71
Anden off	28 (33%)	695 (29%)	723
At-risk	41 (48%)	1.547 (65%)	1.588
Total	86	2.370	2.456

# Lokalt recidiv

operation 1996-2000

	< 35 år	35+ år	Total
Cikatrice	2 (2%)	11 (1/2%)	13
Res.mam.	6 (7%)	56 (2%)	62
Loco-reg.	1 (1%)	28 (1%)	29
Anden off	30 (37%)	765 (27%)	795
At-risk	43 (52%)	2.010 (70%)	2.053
Total	82	2.870	2.952

# Årsagsspecifik kumulativ incidens

Opdelt på alder, n=5.408

Lokalt recidiv samt øvrige hændelser

