

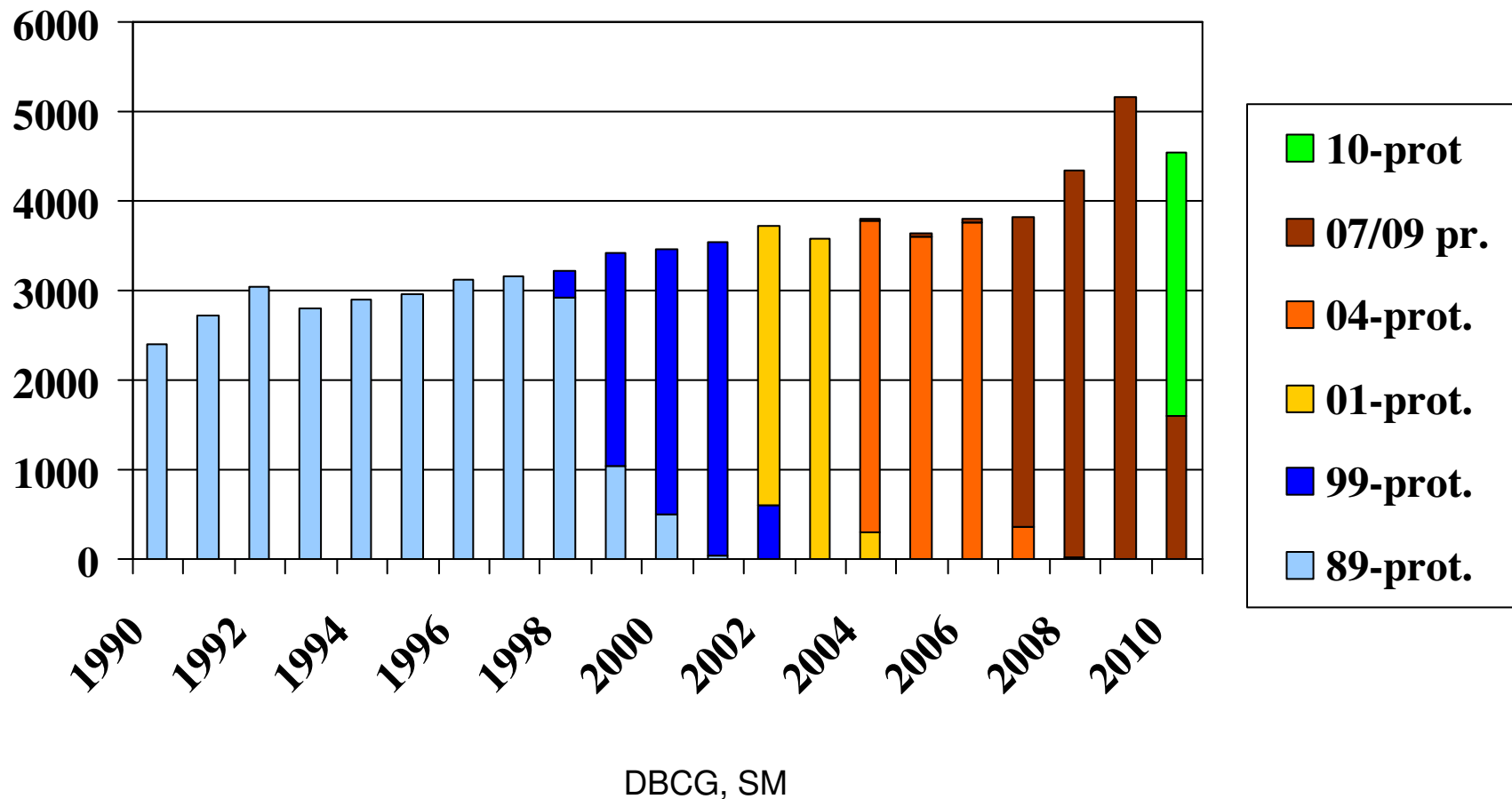
# Repræsentantskabs møde

24-1-2011

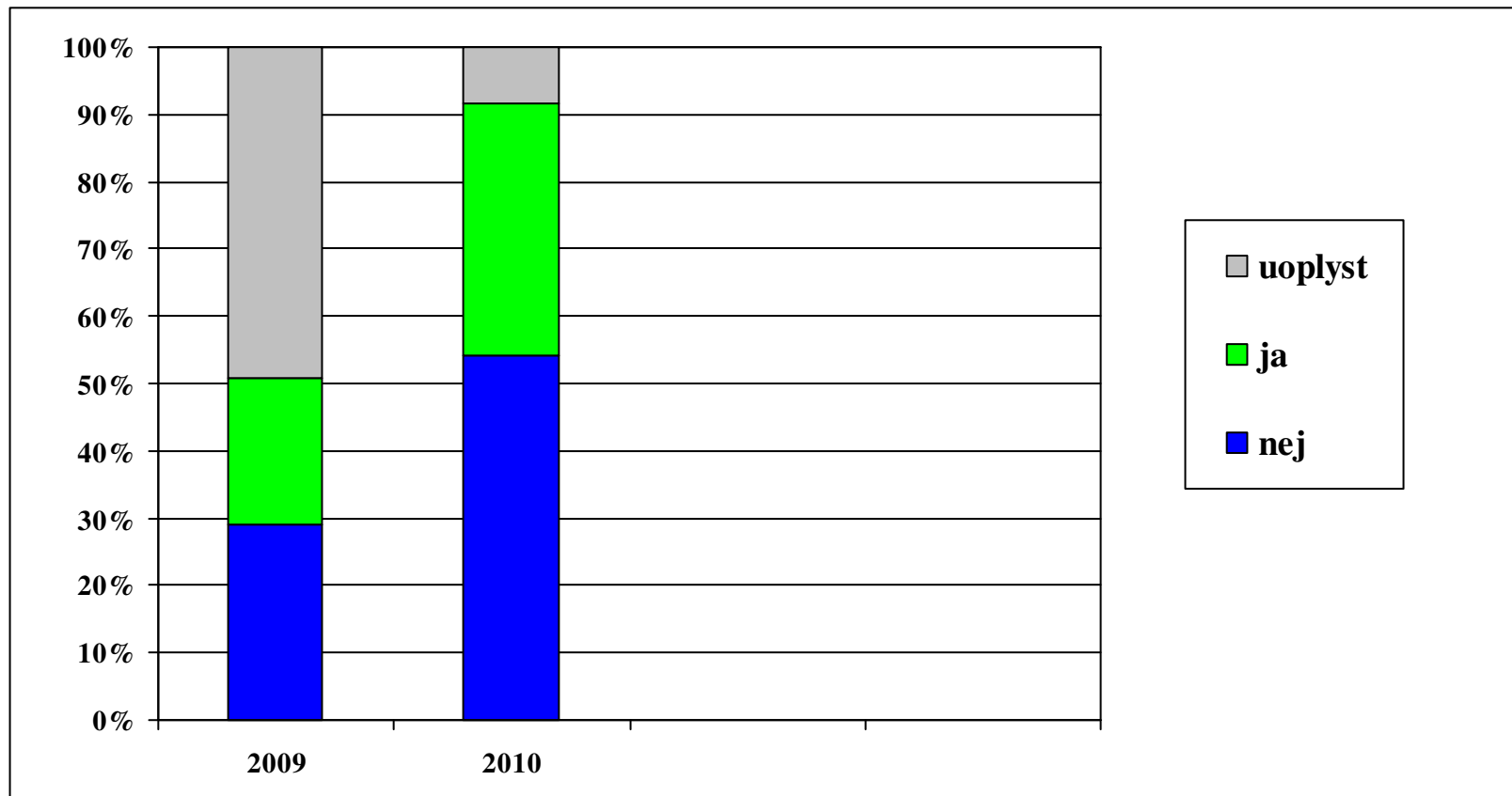
Susanne Møller

DBCG

# Antal i DBCG 89/99/01/04/07/09/10 (n=73.237, i hele databasen: n= 99.152 )



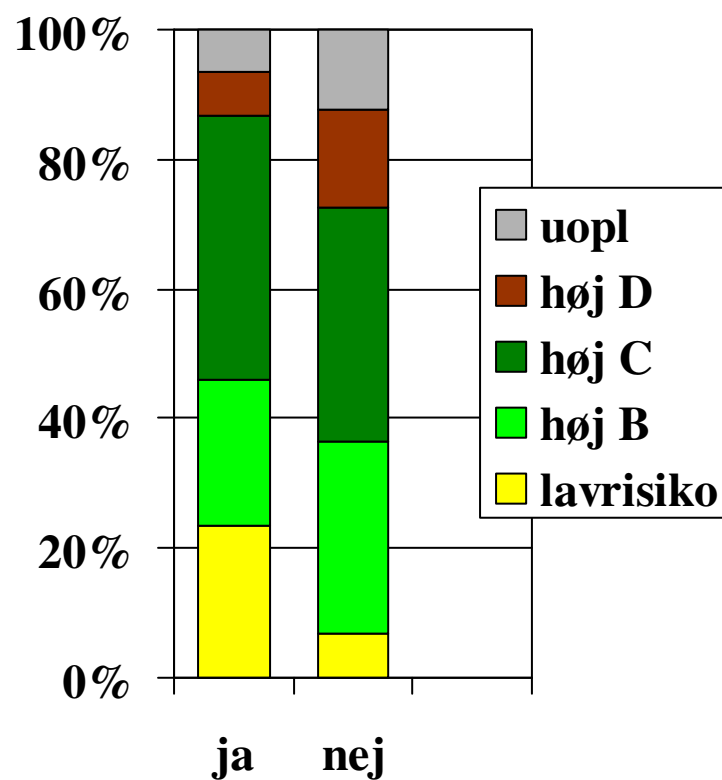
# Fundet ved populationsscrening



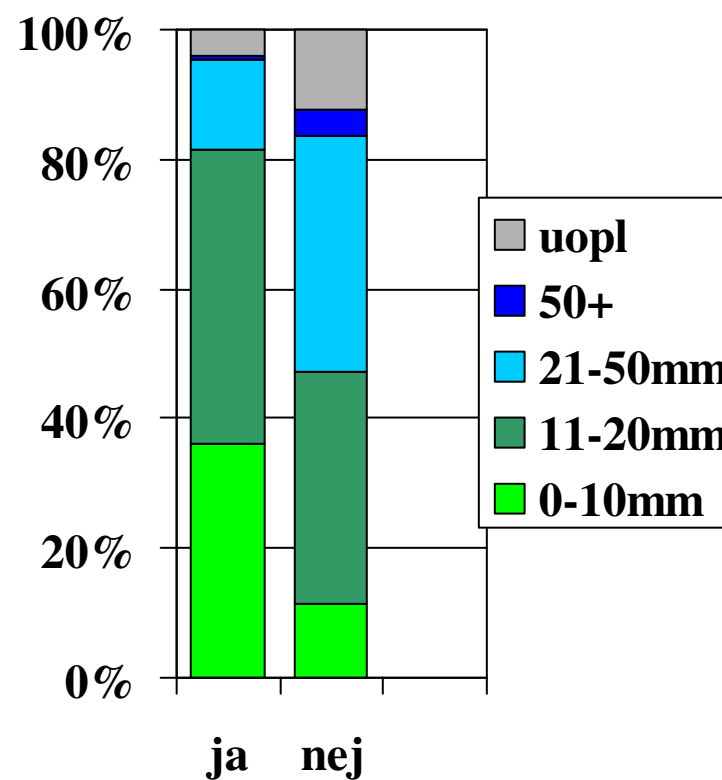
DBCg, SM

# Prognostiske faktorer vs. fundet ved screening

risikogruppe

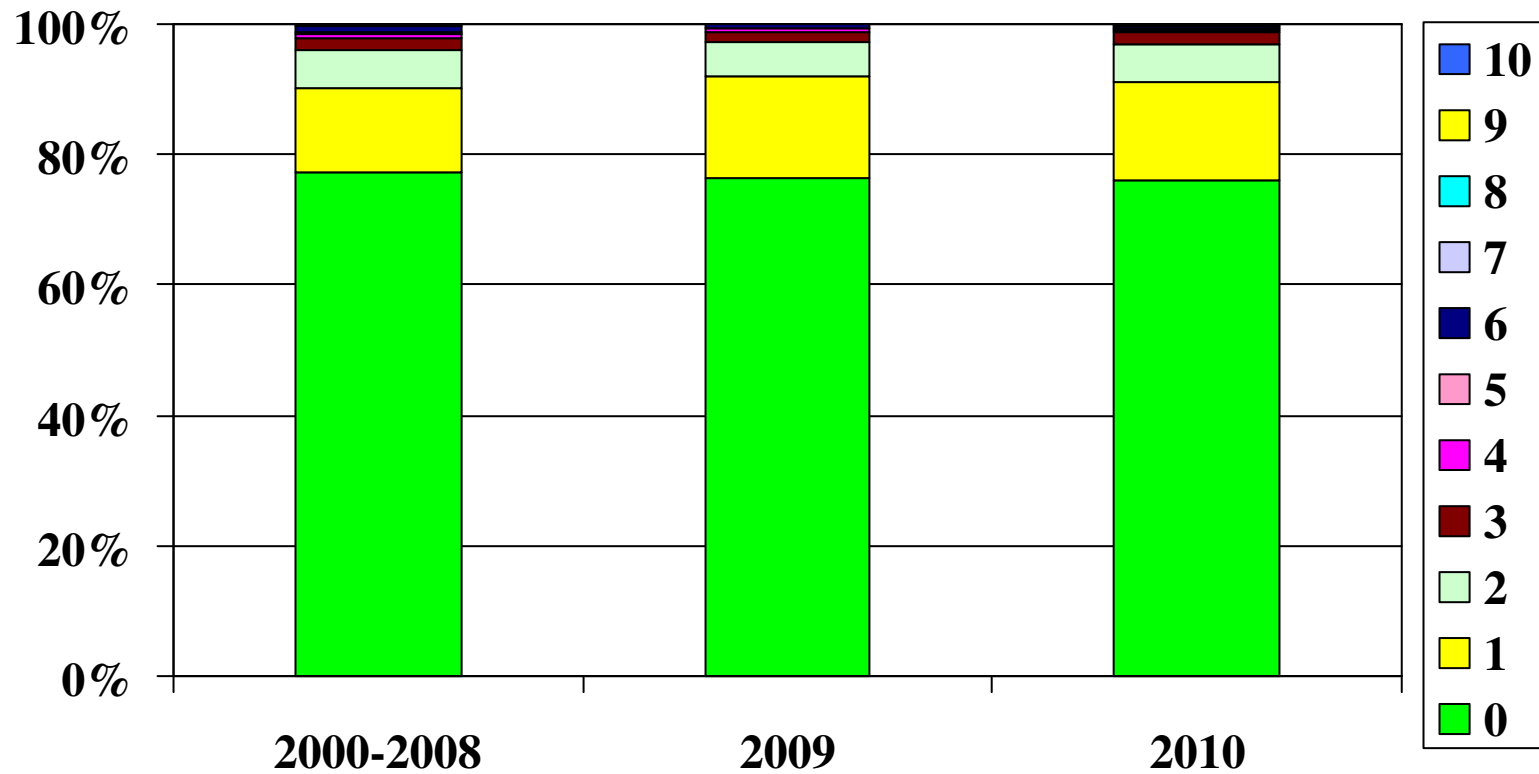


tumorstørrelse



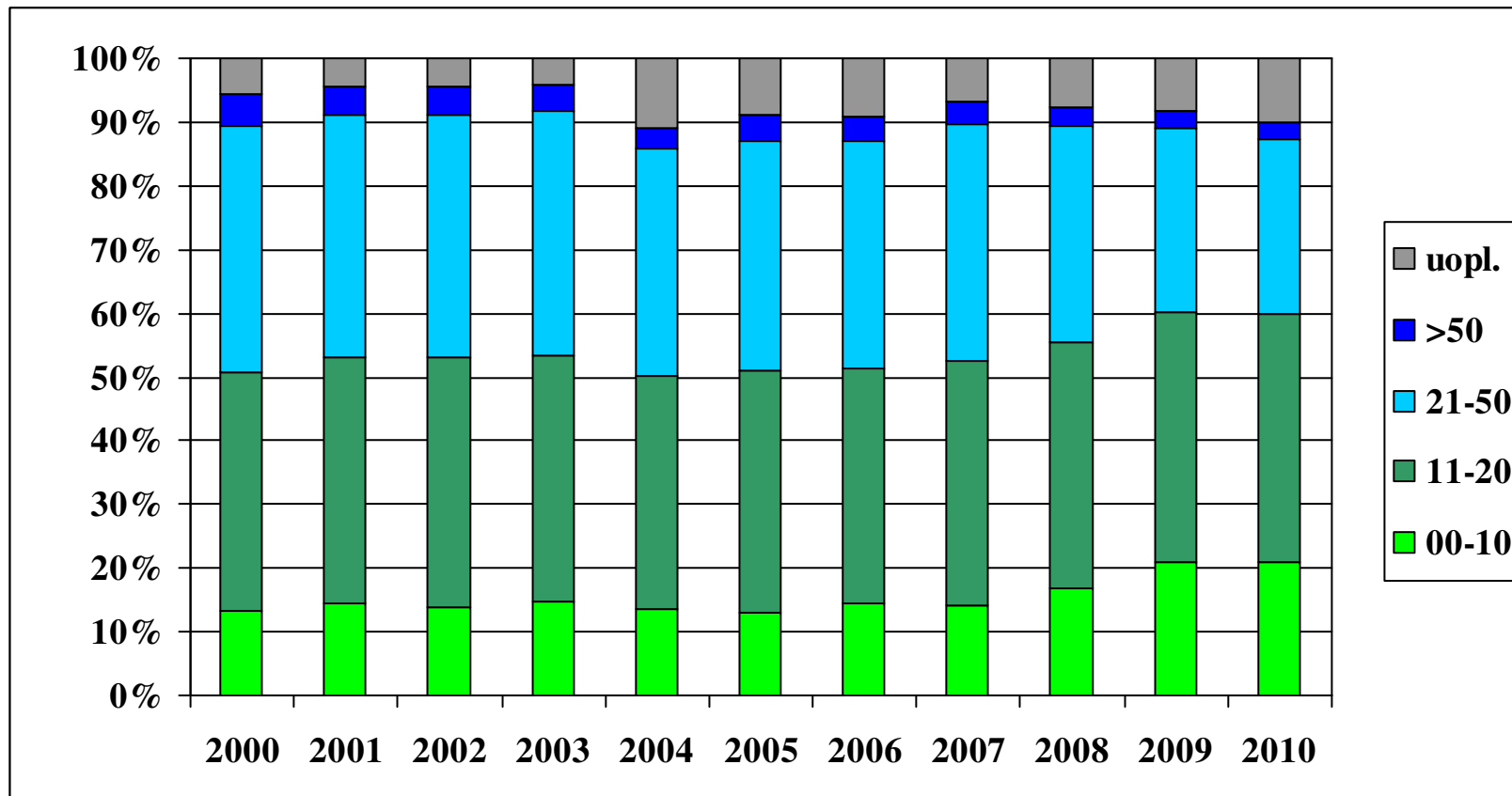
# Comorbiditet

( 2000-2008 : n=2300, 2009 : n=3850, 2010 : n=4093)



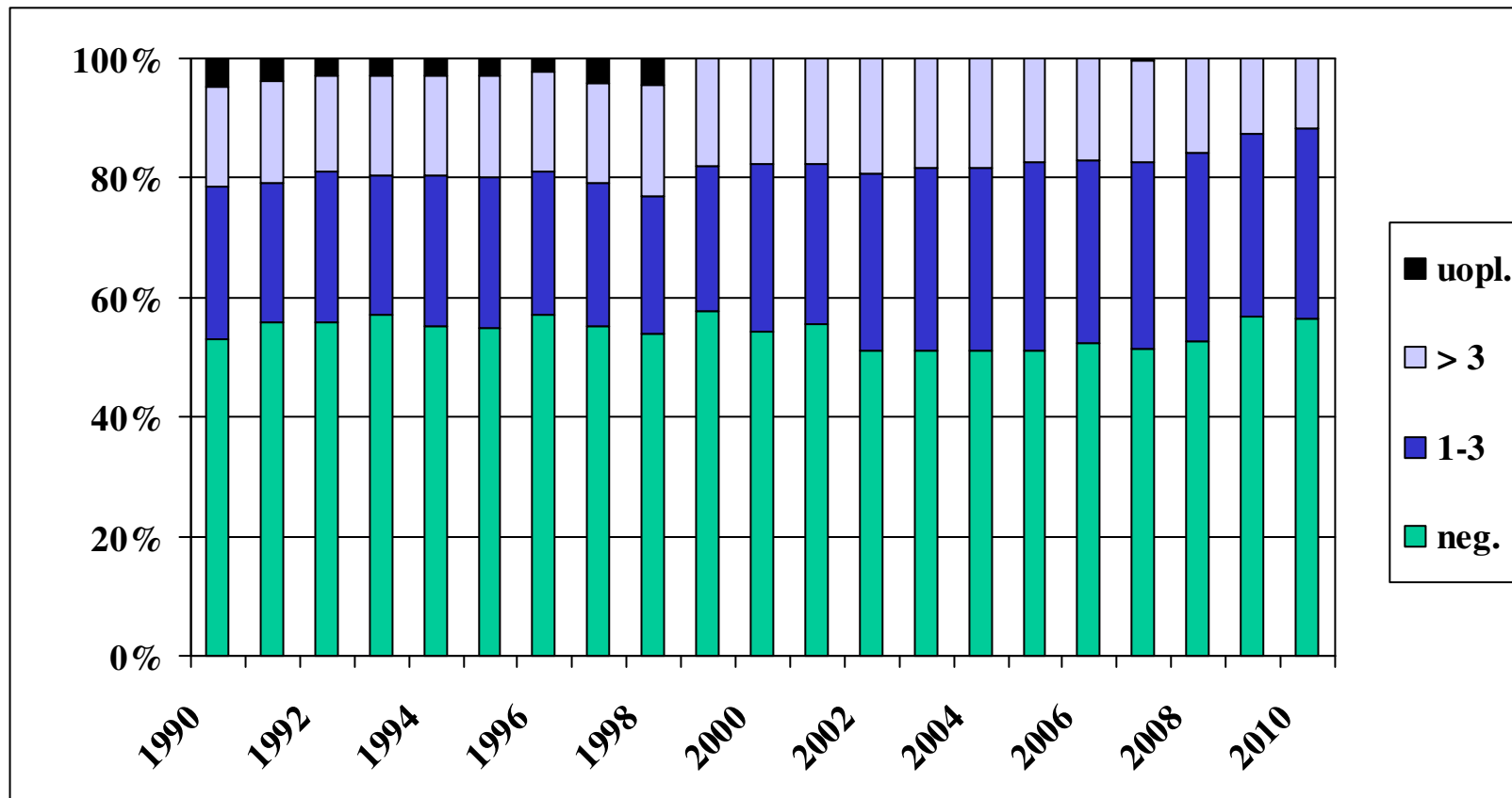
# Fordeling af tumorstørrelse pr år

(største diameter i mm- ny inddeling)



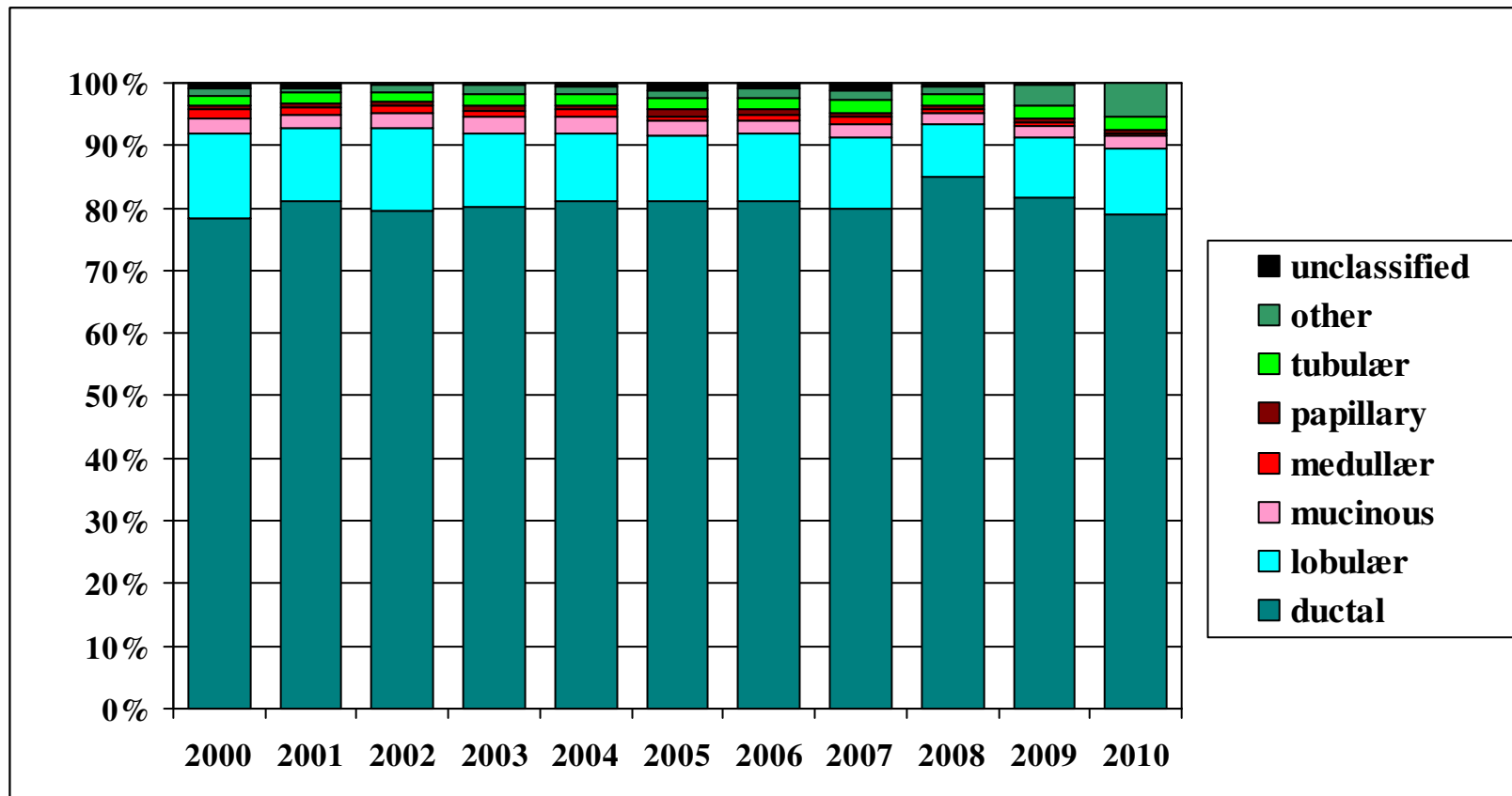
DBCg, SM

# Antal positive lymfeknuder pr år



DBCg, SM

# Fordeling af diagnosetype pr år

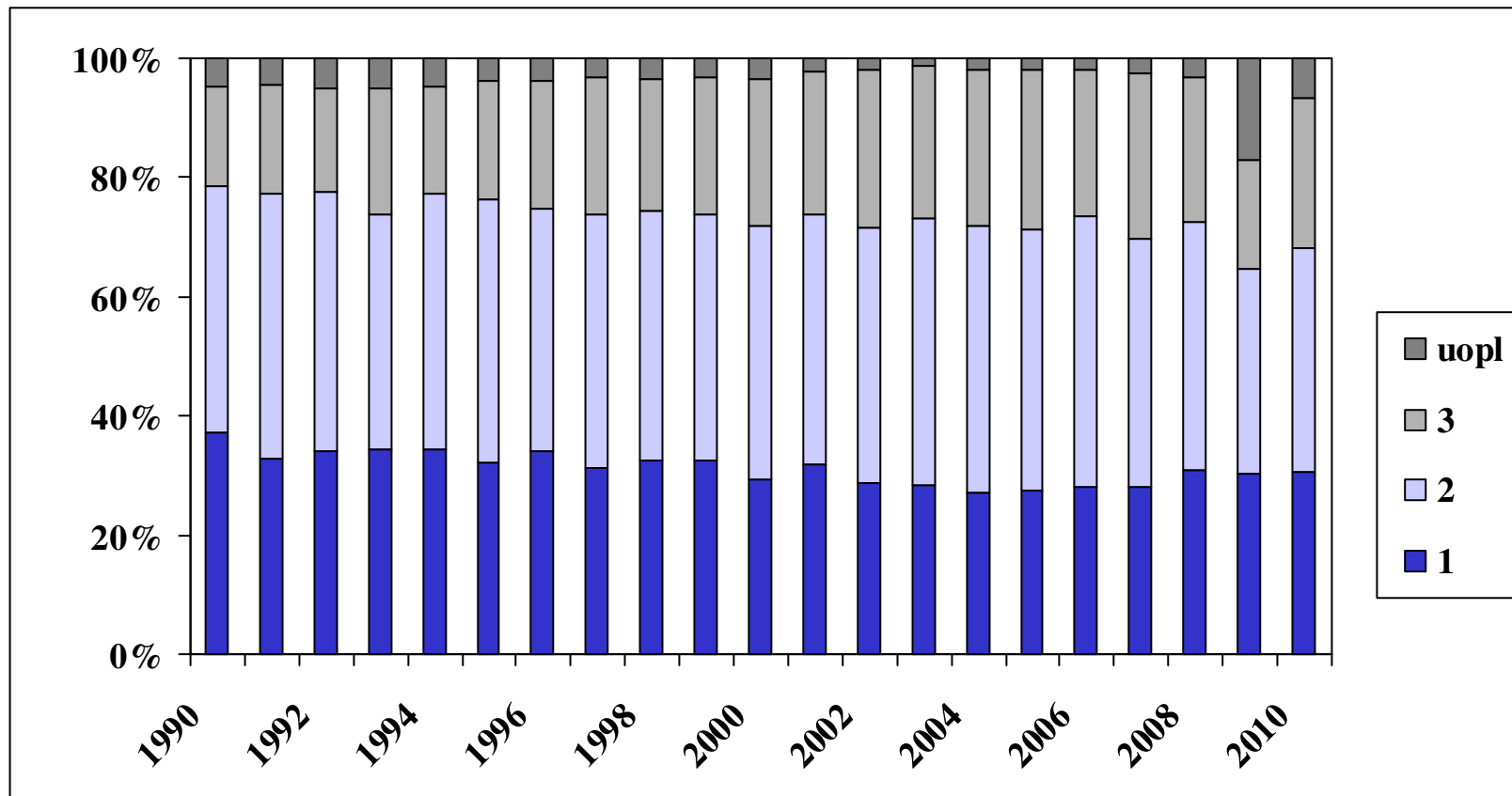


DBCg, SM



# Malignitetsgrad 1-3 pr år

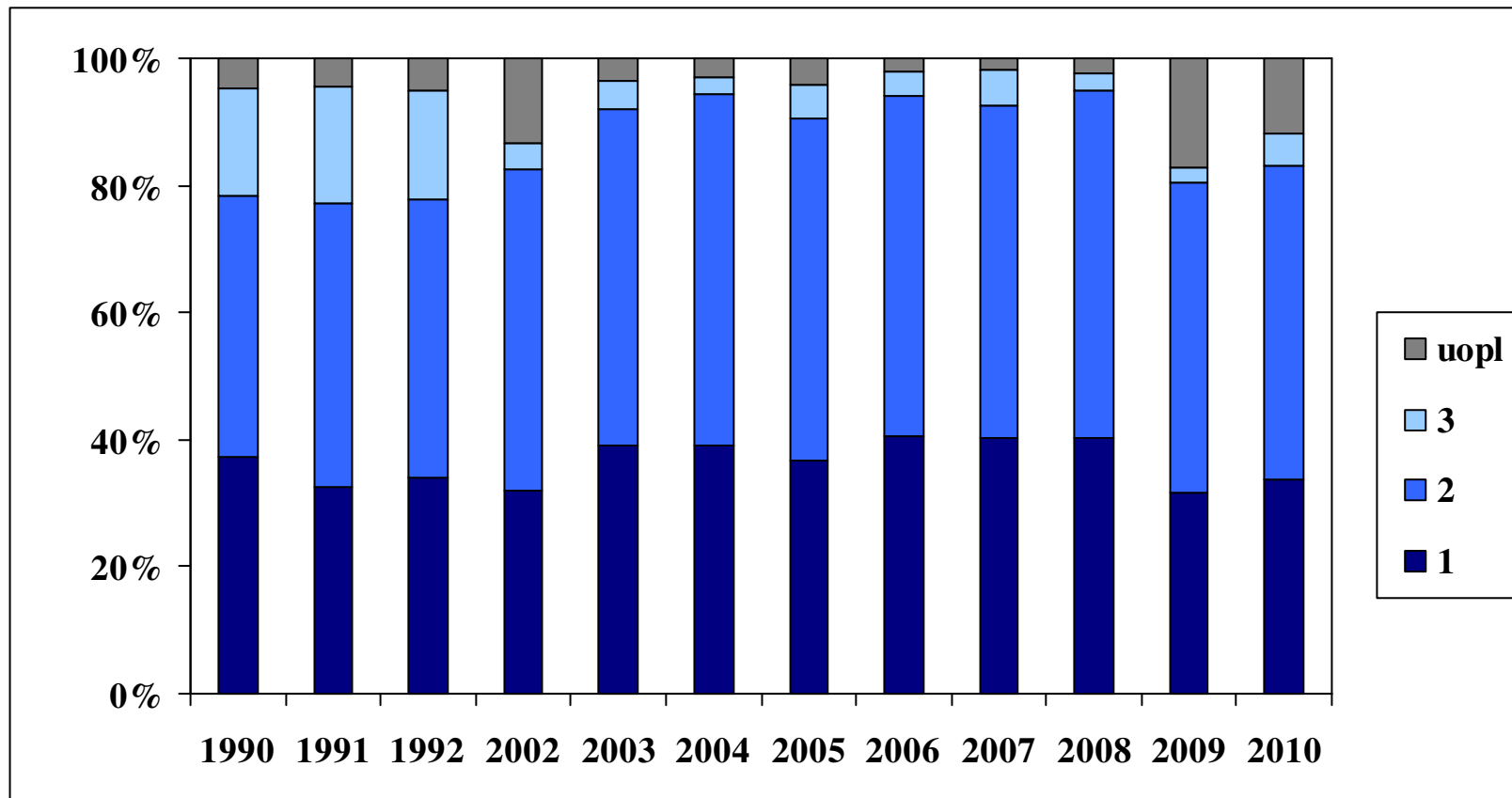
(ductal tumor n=42.010)



DBCG, SM

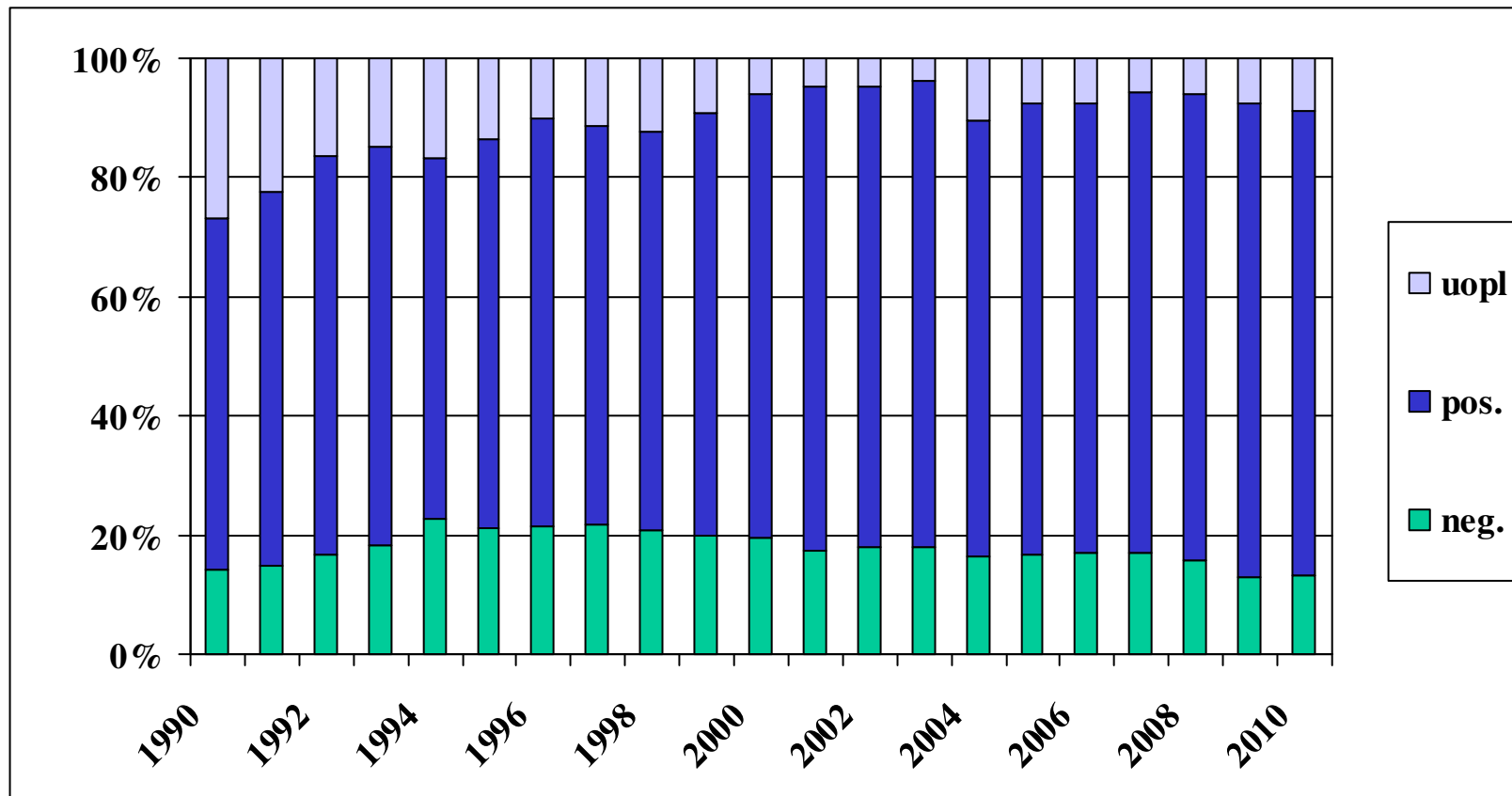
# Malignitetsgrad 1-3 pr år

(lobulær tumor n=3515 (350- 450 pr år))



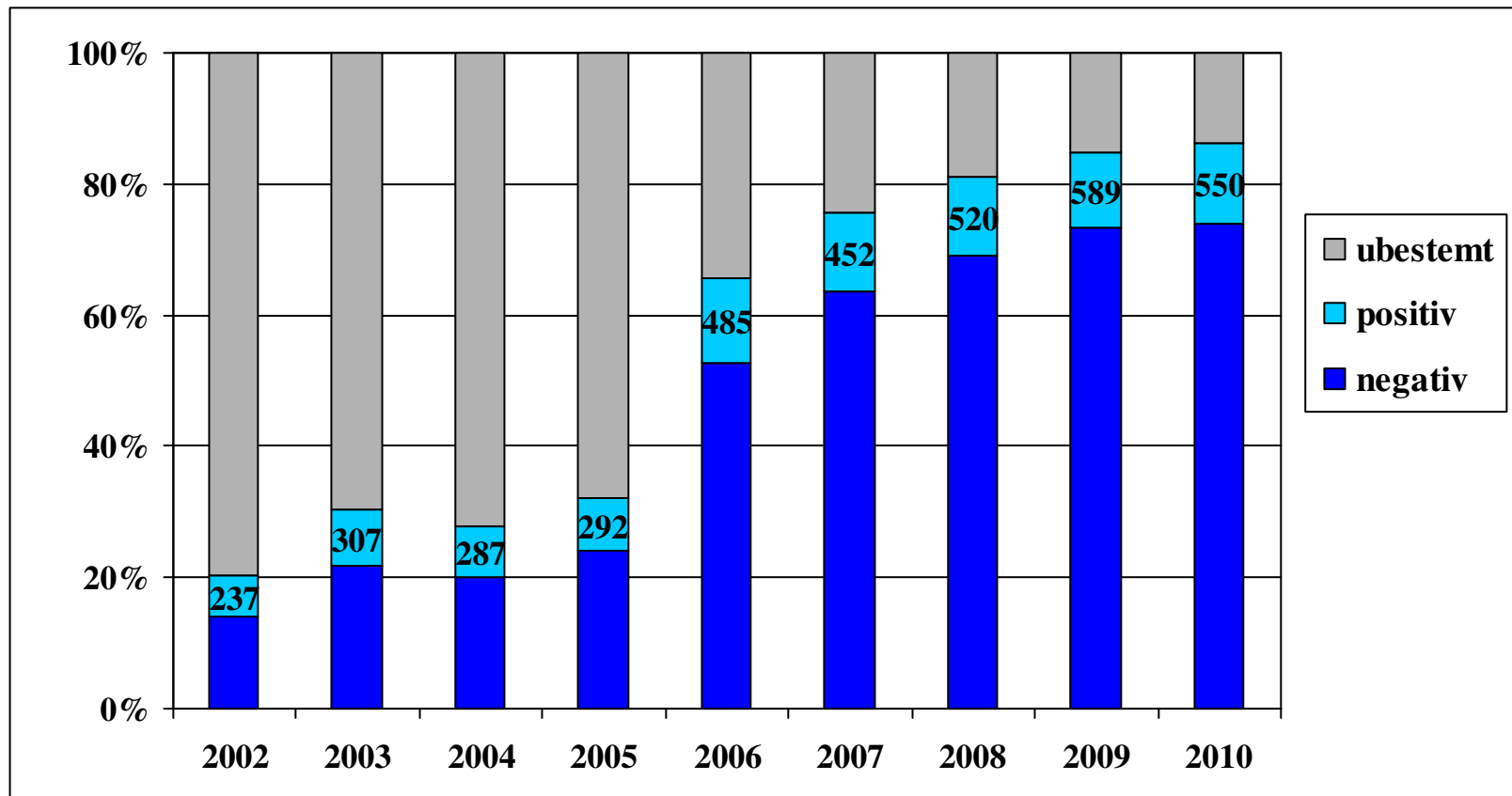
DBCG, SM

# Receptorstatus pr år



DBCG, SM

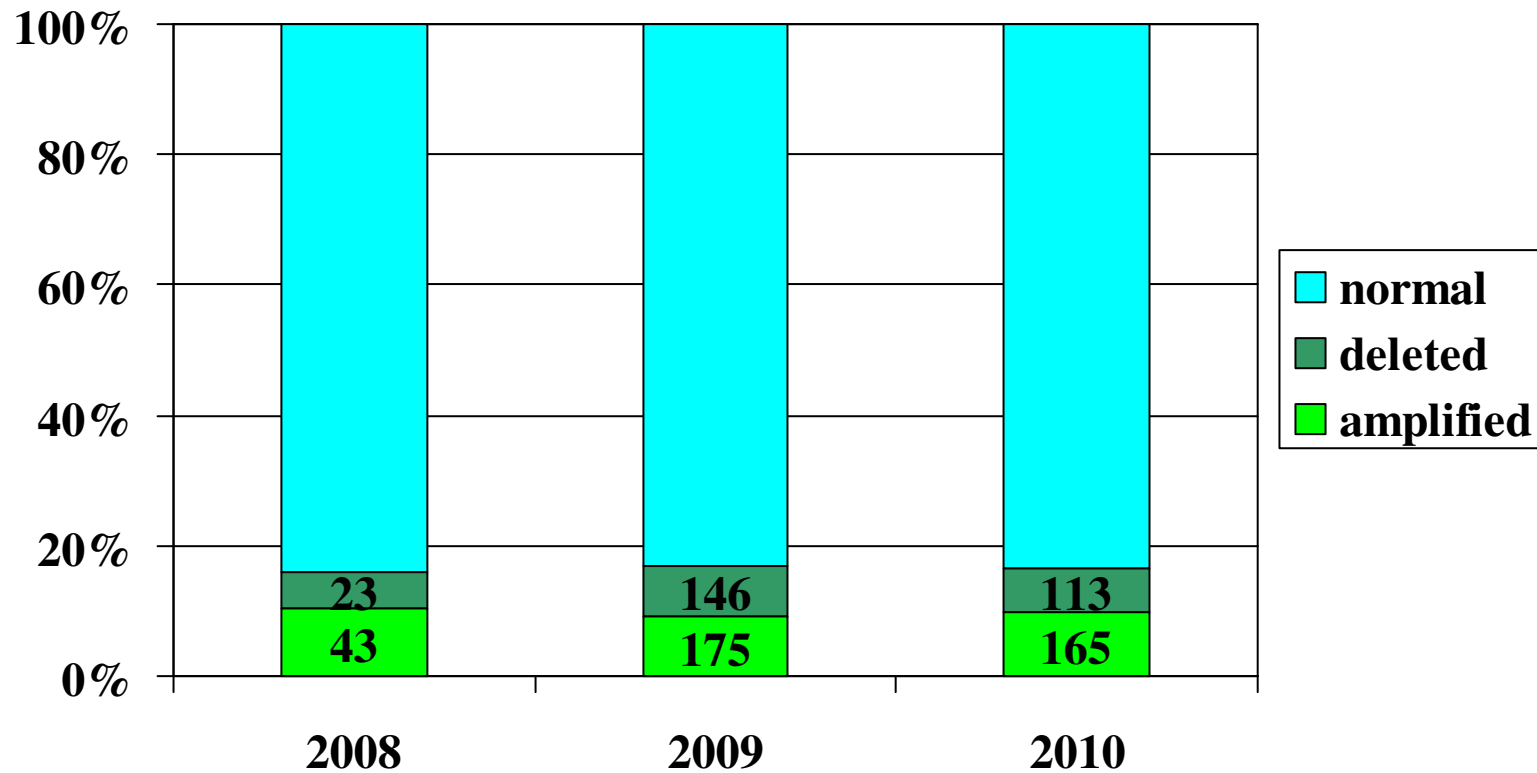
# HER2 status pr år (2002-2010)



DBCg, SM

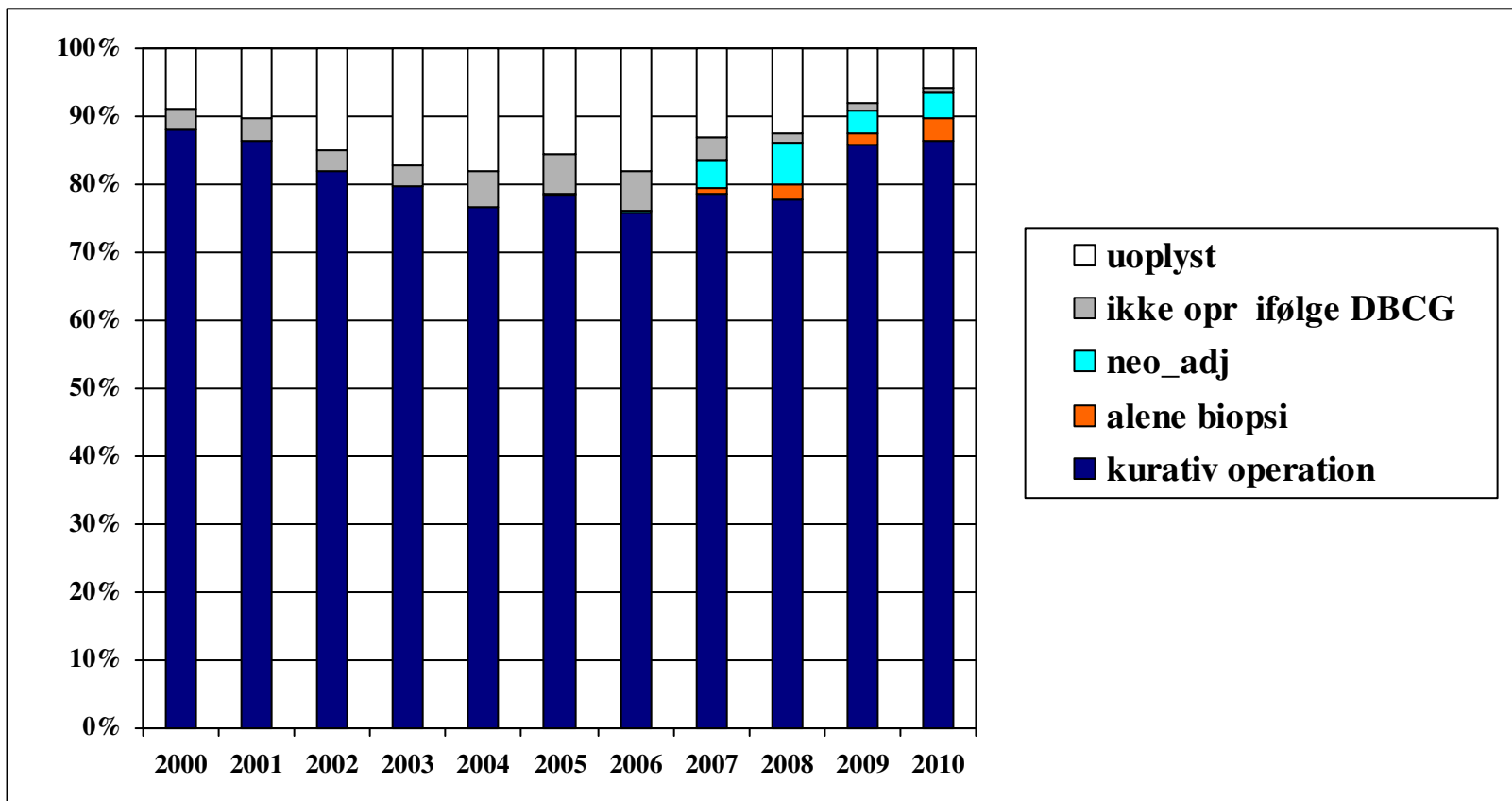
# TOP2A bestemmelse

2008 -2010 (9.5%, 37.1%, 36.9%)



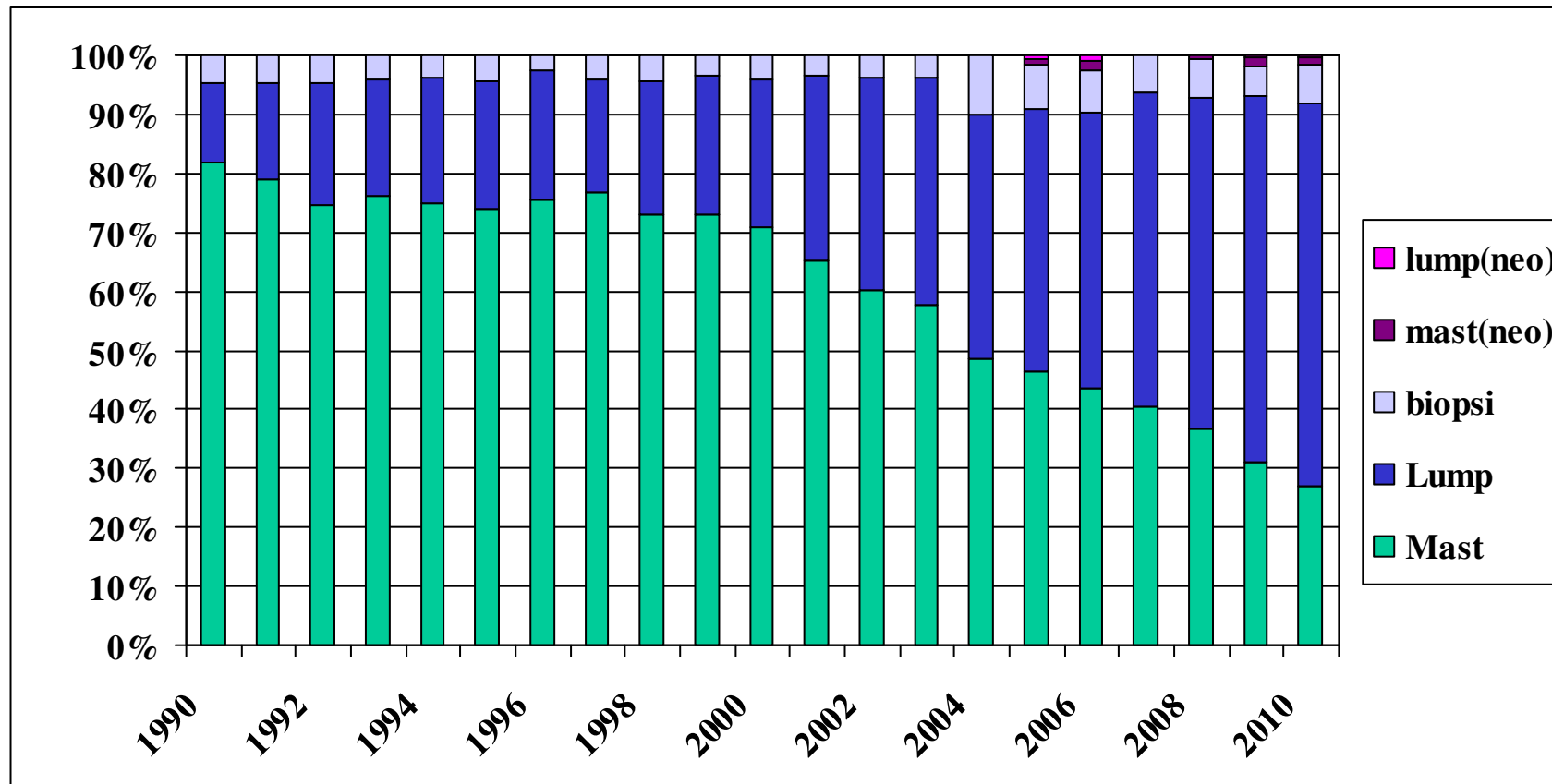
DBCg, SM

# Fordeling af præoperativ klassifikation



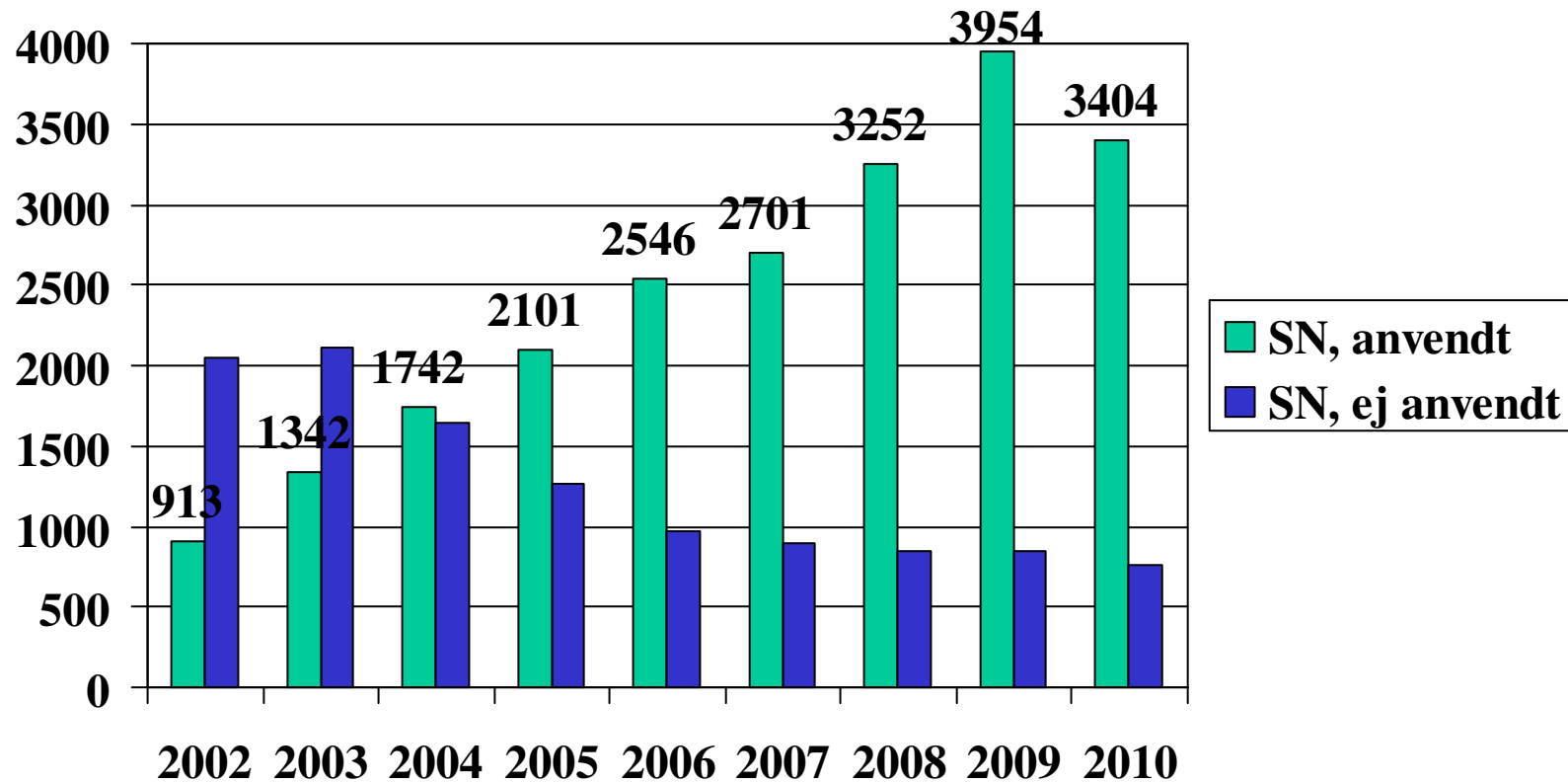
DBCG, SM

# Fordeling af operationstype pr år



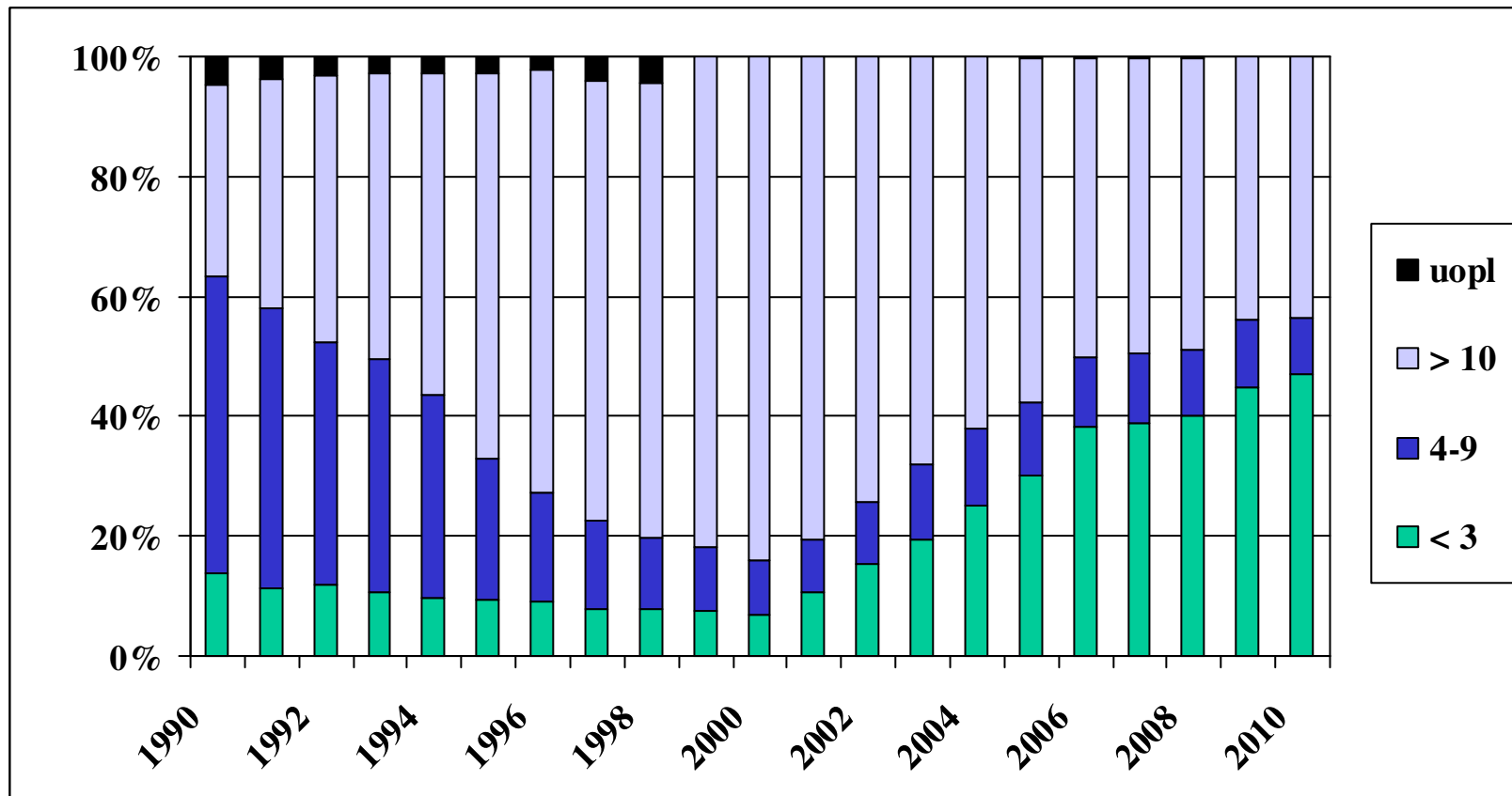
DBCG, SM

# Sentinel Node pr år (Node -/+) efter 2002





# Antal påviste lymfeknuder pr år

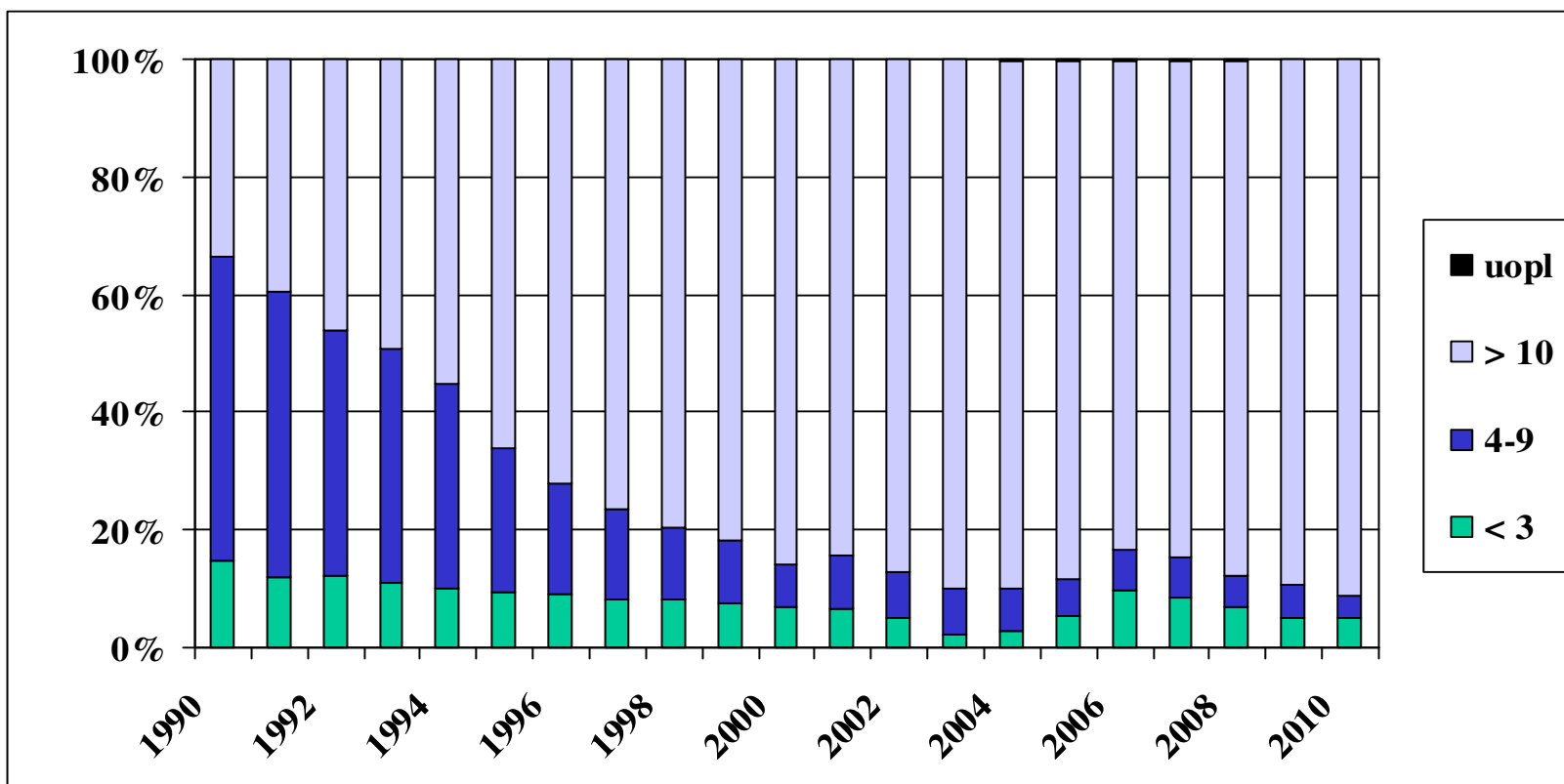


DBCg, SM

# Antal påviste lymfeknuder pr år

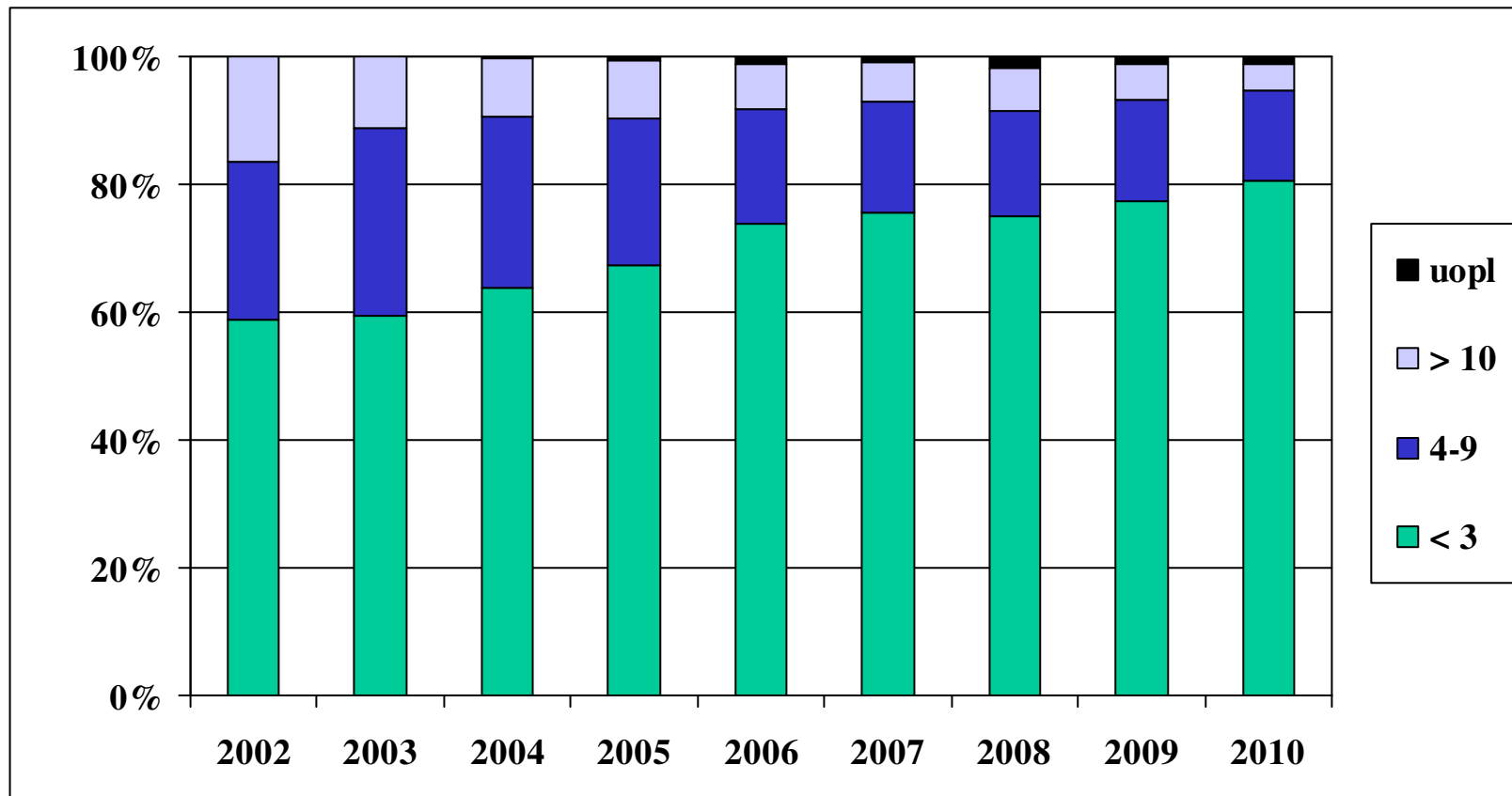
## Ikke Sentinel Node

(-SN eller +SN, N-pos)



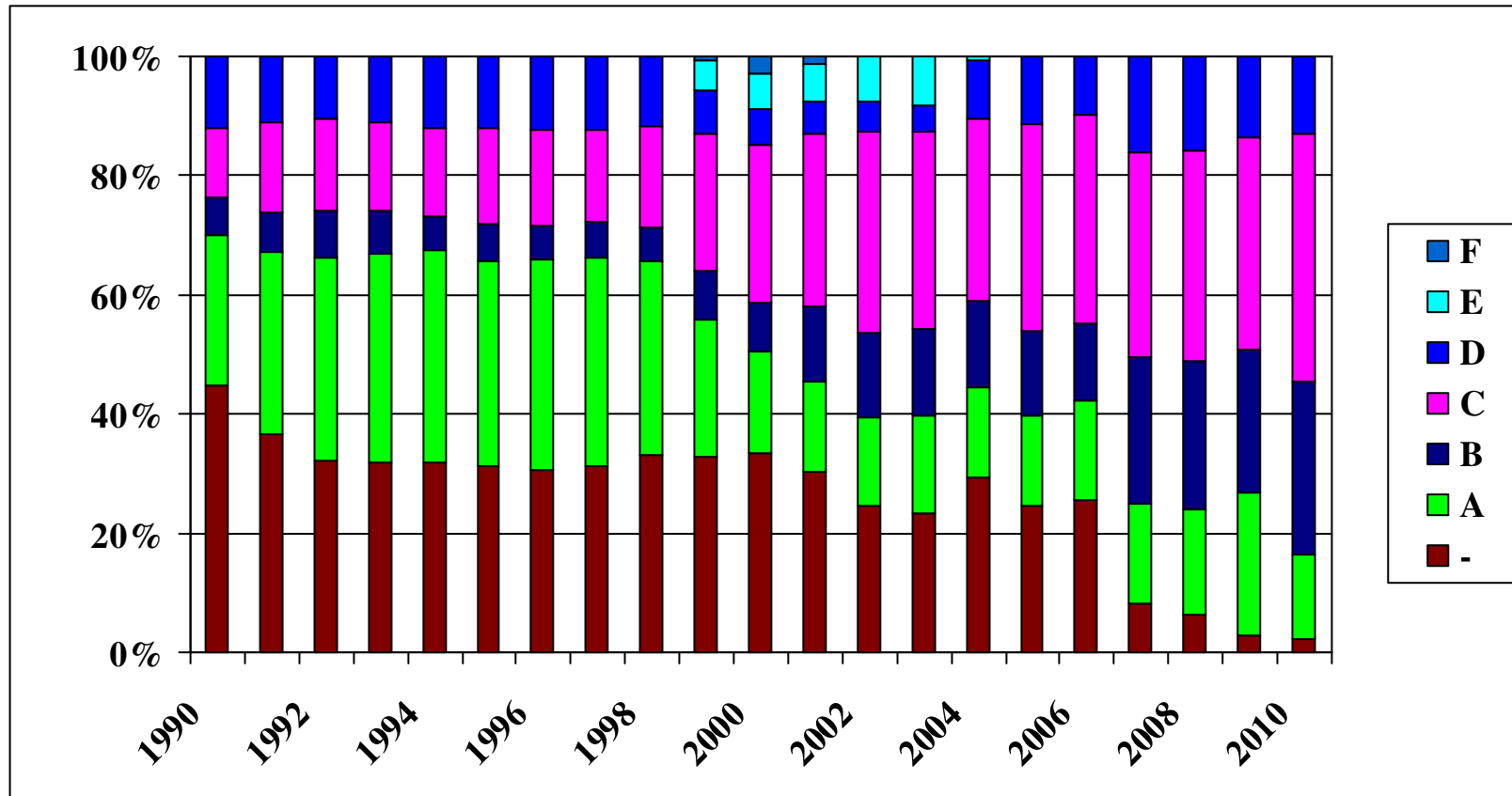
DBCg, SM

# Antal påviste lymfeknuder pr år med Sentinel Node (SN, N-neg)



DBCg, SM

# Fordeling på protokol pr år



DBCG, SM

# Fordeling på standard behandling i 2010

Protokol	Kriterier 2009	Kriterier 2010	Medicinsk efterbeh.	Antal (n=4531)
Ikke i protokol				153 (3.4.%)
A lavrisiko	>35 år N-, tumor<=2 cm (duktal, I or lobulær I-II or Anden diag) R+/? , HER2 -/? , Top2A normal/?	>=50 år N-, tumor<=1 cm (duktal, I or lobulær I-II or Anden diag) R+/? , HER2 -/? , Top2A norm/?	Ingen	561(12.%)
B,(t) højrisiko	<60 år, R+/R? , HER2 -/? , eller HER2 +	ER : 1-9% eller ER>=10% Og komb (alder, tumor) eller >= 60 år Her2+	KT, ET, ( T)	1220 (27%)
C højrisiko	>=60 år, R+/R?	ER >=10% Og komb (alder, tumor), ingen øvrige risk	ET	1608 (35%)
D,(t) højrisiko	R- HER2 -/? , eller HER2 +	ER: 0%	KT, (T)	548 (12%)
Ikke bestemt				437(9.6%)

# Randomiserede protokoller i 2010

Protokol	Regime	2007- 2008 antal	2009 antal	2010 antal
READ start juli 08	1 EC → Docetaxel 2 Docetaxel+ Cyklofosamid	80	492	520
ALTTO start nov 07	1 Trastuzumab 2 Lapatinib 3 Trastuzumab → Lapatinib 4 Trastuzumab + Lapatinib	164	15	
REAL start juli 09	Operation -> letrozol Neo_adj 4 uger -> operation		13	25 (+4)
RT 09 Stråle beh Start sept 09			175	288 (+49)
SOLE Start nov 09	Fortsat letrozole efter 5 år Continuert vs intermitterende		14	163 (+9)

# Årsager til ikke protokol i 2010

Årsag	Antal		
	2010	2009	(2008)
<b>Fjernmetastaser</b>	<b>42</b>	<b>50</b>	<b>(59)</b>
Tidl.malign	90	91	(77)
<b>Sarkom/phylloides</b>	<b>2</b>	<b>3</b>	<b>(4)</b>
Bilateral	73	97	(103)
Kontraindikation (f.eks. Alder)	34	61	(109)
Teknisk inoperabel	41	40	(79)
Ikke opereret ifølge dbcg	60	157	(303)
<b>Andet</b>	<b>56</b>	<b>69</b>	<b>(142)</b>
<i>Død &lt;4 uger efter operation</i>			
<i>Fejlbehandlet / fejlklassificeret</i>			
<i>fravalg</i>			

DBCG, SM